

City of Gold Bar



2022

COMPREHENSIVE
EMERGENCY
MANAGEMENT
PLAN

February 2022

CITY OF GOLD BAR
RESOLUTION NO. 22-04

A RESOLUTION OF THE CITY COUNCIL OF THE CITY OF GOLD BAR,
WASHINGTON, ADOPTING THE CITY OF GOLD BAR 2010
COMPREHENSIVE EMERGENCY MANAGEMENT PLAN.

WHEREAS, RCW 38.52.070 “local Organizations and Joint Local Organizations authorized-establishment, operation, emergency powers, and Procedures,.”, authorizes the adoption of a Comprehensive Emergency Management Plan; and

WHEREAS, the Gold Bar City Council has determined that it is in the best interest of the citizens of the city to adopt such plan;

NOW THEREFORE,

THE CITY COUNCIL OF THE CITY OF GOLD BAR, WASHINGTON HEREBY RESOLVES AS FOLLOWS:

Section 1,The Gold Bar City Council hereby adopts the 2010 Comprehensive Emergency Management Plan attached as Exhibit A, incorporated by this reference as if set forth in full.

RESOLVED this _____, day of _____, 2010

ATTEST:APPROVED:

Laura M. Kelly, City Clerk-Treasurer

Joe Beavers, Mayor of Gold Bar

TABLE OF CONTENTS

Table of Contents	I
Emergency Contact Numbers	III
Distribution Page	IV
Abbreviations	V
Definitions	VI
 Basic Plan	
I. Introduction	
Mission	1
Purpose	1
Scope	2
II. Policies	
Authorities	2
Assignment of Responsibilities	2
Limitations	2
III Situation	3
IV Concept of Operations	3
A. Concept	3
B. Time Phases of Disaster Operations	4
1. Mitigation and Preparedness	4
2. Response – Increased Readiness Period	4
3. Response – Emergency Period	5
4. Recovery Phase	5
V Organization and Responsibilities	5
A. Organization	5
B. Responsibilities	6
1. Municipal and County Government	6
a. Mayor and Elected Officials	6
b. Legislative Branch (City Council).....	6
c. City Emergency Management Coordinator	7
d. Law Enforcement	7
e. Fire Services	8
f. Public Works	8
g. Public Health	9
h. Assessor	9
i. Finance/Treasure/City Clerk	9
j. City Emergency Operations Center	9
k. Proclamation of Evacuation	10
2. Other Agencies	10

	a. Public Utilities Department	10
	b. American Red Cross	10
	c. Water Department	11
	d. Gold Bar Elementary School	11
VI	Administration and Logistics	11
	A. Administration	11
	B. Financial Management	12
	C. Logistics	12
VII	Direction and Control	13
	A. General	13
	B. Coordination	13
	C. Facilities	13
 <u>Appendices</u>		
	Appendix 1 Direction and Control	14
	Annex A. Emergency Operations Center Representatives.....	16
	Annex B. Emergency Operations Center Location / Map.....	17
	Appendix 2 Continuity of Government	18
	Annex A. Roster of Elected Officials and Alternates	19
	Annex B. Roster of Department and Agency Heads	20
	and Alternates	
	Appendix 3 Emergency Resource Management	21
	Annex A. Emergency Resource List	22
	Appendix 4 Emergency Public Information	23
	Appendix 5 Training and Education	24
VIII	Natural and Man-Made Disasters	26
	Annex A. Disasters	26
	Annex B. Evacuation Routes – Maps	31
	Map – A.	32
	Map – B.	33
	Map – C.	34
	Map – D.	35

City of Gold Bar Comprehensive Emergency Management Plan (CEMP)

Emergency Contact Numbers

If immediate City emergency or disaster assistance is required, contact the City of Gold Bar Emergency Management Office (CEMO):

Note: If you have an immediate emergency call 9-1-1

Business hours: 8:00 am – 5:00 pm Monday – Friday
Telephone: (360) 793-1101 Fax: (360) 793-2282

After hours, weekends, holidays:

City of Gold Bar Mayor: Steve Yarbrough
Cell: 425-238-2655

City of Gold Bar Police Chief: Craig Hess
Non-Emergency: 425-407-3999
Cell: 425-508-8286

City of Gold Bar Public Works Director: Rich Norris
Cell: 425-238-4649
Office: 360-793-1101

City of Gold Bar Water Department: Richard Baker
Cell: 425-238-1935

City of Gold Office Manager/Utility Clerk/ACO/EMC: Denise Beaston
Office: 360-793-1101
Cell: 425-238-1815

City of Gold Bar City Clerk: Lisa Stowe
Office: 360-793-1101

Snohomish PUD #1 Water Emergencies: 425-783-8605 during business Hrs.
After Hrs. for PUD Water & Electric: 425-783-1000

City Radio: 800 MHz
DEM Radio: 800 MHz - EOC HAIL

*** Official number for departments to be used for all normal business. Home and cell numbers are for emergency use only.**

**CITY OF GOLD BAR
COMPREHENSIVE EMERGENCY MANAGEMENT PLAN (CEMP)**

DISTRIBUTION PAGE

This Plan will be distributed to all participating city agencies, selected county, state and federal government agencies, selected state and county organizations, American Red Cross and other volunteer organizations, Mukilteo Library system, private organizations and other interested individuals.

Primary Distribution List

City of Gold Bar
Snohomish County Sheriff's Dept.-Gold Bar Region
Snohomish County Fire District 26
Gold Bar Elementary School
Snohomish County Department of Emergency Management

ABBREVIATIONS

ACCESS	A Central Computerized Enforcement Service System
ARC	American Red Cross
ARES	Amateur Radio Emergency Services
BPA	Bonneville Power Administration
CAP	Civil Air Patrol
CEMC	City Emergency Management Coordinator
CEMO	City Emergency Management Office
CEMP	Comprehensive Emergency Management Plan
CERT	Community Emergency Response Team
CFR	Code of Federal Regulations
CEMNET	Comprehensive Emergency Management Network
COE	Corps of Engineers
CP	Command Post
CPCS	Common Program Control Station
CTED	Community Trade and Economic Development, Washington State
DAC	Disaster Assistance Council or Center
DEM	Department of Emergency Management, Snohomish County
DFO	Disaster Field Office
DNR	Department Of Natural Resources
DRC	Disaster Recovery Center
EAS	Emergency Alert System
EM	Emergency Management
EMD	Emergency Management Division of Washington State
EMC	Emergency Management Coordinator
EMO	Emergency Management Office
EMS	Emergency Medical Services
EOC	Emergency Operations Center
ESCA	Emergency Services Coordinating Agency, South Snohomish County
ESF	Emergency Support Function
FAA	Federal Aviation Administration
FCO	Federal Coordinating Officer
FEMA	Federal Emergency Management Agency
FRP	Federal Response Plan
HAZMAT	Hazardous Materials
HIVA	Hazardous Identification and Vulnerability Assessment
ICS	Incident Command System
JIC	Joint Information Center
LEPC	Local Emergency Planning Committee
MAST	Military Assistance to Safety and Traffic
MSCA	Military Support to Civil Authorities
NAWAS	National Weather Advisory System
NOAA	National Oceanic and Atmospheric Administration
PDA	Preliminary Damage Assessment
PIO	Public Information Officer
RACES	Radio Amateur Civil Emergency Service
RCW	Revised Code of Washington
ROC	Regional Operations Center (FEMA)

SAR	Search and Rescue
SARA	Superfund Amendments and Reauthorization Act of 1986 -- Title III of SARA includes detailed provisions for community planning and is known as the Emergency Planning and Community Right-to-Know Act (EPCRA)
SBA	Small Business Administration
SCO	State Coordinating Officer
SITREP	Situation Report
SOP	Standard Operating Procedure
UC	Unified Command
USAR	Urban Search and Rescue
VOAD	Voluntary Organizations Active in Disasters
WAC	Washington Administration Code
WMD	Weapons of Mass Destruction

DEFINITIONS

Biological Agents: The FBI WMD Incident Contingency Plan defines biological agents as microorganisms or toxins from living organism that have infectious or noninfectious properties that produce lethal or serious effects in plants and animals.

Chemical Agents: The FBI WMD Incident Contingency Plan defines chemical agents as solids, liquids, or gases that have chemical properties that produce lethal or serious effects in plants and animals.

Common Program Control Broadcast Station: An element of the Emergency Alert System. A primary broadcast station in each operational (local) area assigned the responsibility for coordinating the operations for the broadcasting of the common programming for the operational area.

Consequence Management: FEMA defines consequence management as measures to protect public health and safety, restore essential government services, and provide emergency relief to governments, businesses and individuals affected by the consequences of terrorism.

Crisis Management: The FBI defines crisis management as measures to identify, acquire and plan the use of resources needed to anticipate, prevent, and/or resolve a threat or act of terrorism.

Damage Assessment: Estimation of damages made after a disaster has occurred which serves as the basis of the County Executive's request to the Governor for a Declaration of Emergency or major disaster.

Disaster Analysis: The collection, reporting and analysis of disaster related damages to determine the impact of the damage and to facilitate emergency management of resources and services to the impacted area.

Disaster Recovery Center: A center set up in the disaster area where individual disaster victims may receive information concerning available assistance, and apply for the programs for which they are eligible. The Disaster Recovery Center will house representatives of the federal, state, and local agencies that deal directly with the needs of the individual victim.

Emergency: "Any hurricane, tornado, storm, flood, high water, wind-driven water, tidal wave, tsunami, earthquake, volcanic eruption, landslide, mudslide, snowstorm, drought, fire, explosion, or other catastrophe which requires emergency assistance to save lives and protect public health and safety or to avert or lessen the threat of a major disaster." (Public Law 93-288)

Emergency Alert System: Consists of broadcasting stations and interconnecting facilities that have been authorized by the Federal Communications Commission to operate in a controlled manner during emergencies.

Emergency Operations Center (EOC): A designated site from which public, private, or voluntary agency officials can coordinate emergency operations in support of on-scene responders.

Emergency Protective Measures: Those efforts to protect life and property against anticipated and occurring effects of a disaster. These activities generally take place after disaster warning, if any, and throughout the incident period.

Emergency Management: The preparation for and the carrying out of all emergency functions, other than functions for which military forces are primarily responsible, to minimize injury and repair damage resulting from disasters caused by natural or man-made causes.

Emergency Operations Plans: Those plans prepared by county and municipal government in advance and in anticipation of disasters for the purpose of assuring effective management and delivery of aid to disaster victims, and providing for disaster prevention, warning, emergency response, and recovery.

Emergency Worker: Any person who is registered with a state or local emergency management organization and holds an identification card issued by the state or local emergency management director for the purpose of engaging in authorized emergency management, or who is an employee of the State of Washington or any political subdivision thereof who is called upon to perform emergency tasks.

Hazards Identification & Vulnerability Analysis (HIVA)

Individual Assistance: Financial or other aid provided to private citizens to help alleviate hardship and suffering, and intended to facilitate resumption of their normal way of life prior to disaster.

Joint Information Center (JIC): A facility that is used by the affected jurisdiction to jointly coordinate the public information function during an emergency.

Major Disaster: “Any hurricane, tornado, storm, flood, high water, wind-driven water, tidal wave, tsunami, earthquake, volcanic eruption, landslide, mudslide, snowstorm drought, fire, explosion of other catastrophe in any part of the United States which, in the determination of the President, causes damage of sufficient severity and magnitude to warrant Major Disaster assistance under PL 93-288, above and beyond emergency management by the federal government, to supplement the efforts and available resources of states, local governments, and disaster relief organizations in alleviating the damage, loss, hardship, or suffering caused thereby.” (Public Law 93-288)

National Warning System (NAWAS): The federal portion of the Civil Defense Warning System, used for the dissemination of warnings and other emergency information from the FEMA National or Regional Warning Centers to Warning Points in each state. Also used by the State Warning Points to disseminate information to local Primary Warning Points. Provides warning information to state and local jurisdictions concerning severe weather, earthquake, flooding and other activities that affect public safety.

Preliminary Damage Assessment (PDA): The joint local, state and federal analysis of damage that has occurred during a disaster and which may result in a Presidential declaration of disaster. The Preliminary Damage Assessment is documented through surveys, photographs, and other written information.

Preliminary Damage Assessment Team: An ad hoc group that comes together after a disaster whose main purpose is to determine the level of disaster declaration that is warranted. The team usually consists of federal, state and local representatives to do an initial damage evaluation of sites damaged.

SARA TITLE III: A major section of the Superfund Amendments and Reauthorization Act entitled the "Emergency Planning and Community Right-to-know Act of 198." Law requires establishment of state and local planning jurisdictions, State Emergency Response Commissions (SERC) and Local Emergency Planning Committees (LEPC) and to conduct emergency planning for hazardous materials incidents. It requires (1) site-specific planning for extremely hazardous substances, (2) participation in the planning process by facilities storing/using hazardous substances and (3) notifications to the commission or committee of releases of specified hazardous substances. It also provides for mechanisms to provide information on hazardous chemicals and emergency plans for hazardous chemical events to the public know as TIER II reports.

Terrorist Incident: The FBI defines a terrorist incident as a violent act, or an act dangerous to human life, in violation of the criminal laws of the United States or of any State, to intimidate or coerce a government, the civilian population, or any segment thereof in furtherance of political or social objectives.

Tsunami: A huge wave caused by a submarine disturbance, such as an earthquake or volcanic eruption.

Weapons of Mass Destruction (WMD): Title 18, U.S.C. 2332a, defines a weapon of mass destruction as (1) any destructive device as defined in section 921 of this title, [which reads] any explosive, incendiary, or poison gas, bomb, grenade, rocket having a propellant charge of more than four ounces, missile having an explosive or incendiary charge of more than one-quarter ounce, mine or device similar to the above; (2) poison gas; (3) any weapon involving a disease organism; or (4) any weapon that is designed to release radiation or radioactivity at a level dangerous to human life.

Utility: Structures or systems of any power, water storage, supply and distribution, sewage collection and treatment, telephone, transportation, or other similar public service.

Voluntary Organizations Active In Disasters (VOAD): Any chartered or otherwise duly recognized tax exempt local, state, national organization or group, which has provided, or may provide services to the state, local governments, or individuals in a major disaster or emergency.

**CITY OF GOLD BAR
COMPREHENSIVE EMERGENCY MANAGEMENT PLAN (CEMP)**

I. INTRODUCTION

Emergency management is a system that, through organized analysis, planning, decision making and assigning of resources will help prevent, prepare for, respond to and recover from the effects of hazards within the City of Gold Bar.

A. Mission

1. To coordinate all emergency management activities that protects the people, property, economy and the environment of the City of Gold Bar.
2. Our mission is applicable to all natural and man-made disasters.
3. Disaster is defined as any hurricane, tornado, storm, flood, high water, wind driver water, tidal wave, tsunami, earthquake, volcanic eruption, landslide, mudslide, snow storm, drought, fire, explosion, hazardous materials incident, incident at fixed nuclear facilities, civil disturbance, terrorism, sabotage, enemy attack, international hostilities, or other catastrophe, emergency or situation in any part of the city which in the judgment of the City's elected officials threaten or actually cause damage of sufficient severity and magnitude to warrant execution of this policy.
4. Our mission is to provide the following:
 - a. A basis for incorporating all individuals and organizations with disaster responsibilities into the emergency program.
 - b. Continuity of government.
 - c. A comprehensive framework for local disaster mitigation, preparedness, response and recovery operations.
5. Our mission follows the planning guidelines outlined by the State of Washington's Comprehensive Emergency Management Plan and is consistent with Snohomish County CEMP.
6. The City of Gold Bar Emergency Management Plan shares general emergency management planning concepts with neighboring jurisdictions, but it stands alone.

B. Purpose

To establish the City of Gold Bar Emergency Management functions and responsibilities of agencies, commissions, boards and councils. This Plan is intended as a comprehensive framework for citywide mitigation, preparedness, response and recovery activities.

C. Scope

This plan considers the emergencies and disasters likely to occur in the City of Gold Bar.

1. To coordinate all emergency management activities which protect the people, property, economy and the environment of the City of Gold Bar.
2. An outline of county, state and local government responsibilities in relation to the federal disaster assistance programs under Public Law 93-288, as amended, and other applicable laws.

II. POLICIES

A. Authority

1. The City of Gold Bar Comprehensive Emergency Management Plan has been developed and is maintained under the following authorities:
 - a. Federal Civil Defense Act of 1950, as amended.
 - b. Public Law 93-288, "Disaster Relief Act of 1974" as amended by PL 100-707, "Robert T. Stafford Disaster Relief and Emergency Assistance Act".
 - c. Public Law 96-342, "Improved Civil Defense".
 - d. Public Law 99-499, "Superfund Amendments and Reauthorization Act of 1986."
 - e. RCW 38.52.070, Local Organizations and Local Organizations authorized-establishment, operation, emergency powers and procedures.

B. Assignment of Responsibilities

This Plan presents the functional responsibilities accepted by designated city agencies and other organizations.

Emergency Support Functions (ESF's), or specific areas of responsibility, would have been established to designate mitigation, preparedness, response and recovery activities of specific emergency management functions. There is either one agency, or joint primary agencies, with primary responsibilities of coordinating with each ESF, while other agencies are tasked with detailed function ESF supporting roles.

C. Limitations

The city will endeavor to make every reasonable effort to respond in the event of an emergency or disaster. However, city resources and systems may be overwhelmed. The responsibilities and tenets outlined in the Plan will be fulfilled only if the situation, information exchange, extent of actual agency capabilities and resources are available at the time. There is no guarantee by the Plan that a perfect response to emergency or disaster incidents will be practical or possible.

III. SITUATIONS

1. The City of Gold Bar is located approximately 28 miles east of the City of Everett. Approximately 2300 people reside within the city limits, encompassing nearly 400 acres. The major transportation route located within the city is US 2. This highway borders the southerly city limit. The major directions of flow on US 2 are East and West.
2. A major earthquake may hamper response by damaging bridges, overpasses, roadways, transportation facilities, communications systems and public safety facilities.
3. Other disaster agents could damage various lifelines and thus reduce the effectiveness of an emergency response. See the City of Gold Bar Hazard Identification and Vulnerability Analysis (HIVA) developed by the City Emergency Management Coordinator (CEMC) for a more detailed description of the city's demographics and geography.
4. This municipality has the responsibility to respond and direct operations to disaster within the boundaries of the incorporated city limits.
5. The City of Gold Bar is a member of the Snohomish County Department of Emergency Management organization that provides emergency management services to the City of Gold Bar.

IV. CONCEPT OF OPERATIONS

A. Concept

1. When possible, the City of Gold Bar Emergency Management Office will provide warning to its citizens of an impending disaster. If a disaster occurs, city, county, fire district and other forces shall respond.
2. The first priority shall be the preservation of life, with other mitigation and recovery efforts second.
3. Each affected jurisdiction shall maintain control of its own operations, with the City of Gold Bar's Emergency Management Office, providing coordination and assistance as necessary.
4. The City of Gold Bar EM Coordinator (CEMC), in coordination with Snohomish County DEM, will respond to the scene to provide field personnel, communications and on-scene coordination if requested by the Unified commander.
5. If the disaster should exceed any jurisdiction's capabilities, the Mayor or designated City Unified Commander shall request additional assistance through Snohomish County DEM.
6. Disaster Recovery Centers (DRCs), including the American Red Cross, shall provide either individual or mass assistance to disaster victims.
7. Disaster operations will be carried out according to existing Disaster Plans and shall be coordinated by officials in their respective EOC(s) using the Incident Command System.

B. Time Phases of Disaster Operations

1. Mitigation and Preparedness

Before a disaster strikes – city, county and other government agencies shall take steps to reduce the disaster effects.

These steps shall include, but not be limited to:

- a.** Conducting continuous planning studies of potential disaster elements in the city and develop a comprehensive emergency management program (CEMP).
- b.** Reviewing the city’s disaster readiness capabilities and upgrading procedures in keeping with changing emergency management and response technology.
- c.** Encouraging and maintaining interagency cooperation and coordination of readiness planning.
- d.** Maintaining vehicles, equipment and facilities in a readiness condition.
- e.** Conducting programs of public information and education on disaster preparedness and personal survival.
- f.** Reviewing and improving response capabilities by conducting training, drills and exercises.
- g.** The city shall conduct disaster exercise drills annually.

2. Response – Increased Readiness Period

If a disaster is imminent all agencies with emergency responsibilities shall:

- a.** Comply with established checklists and review response status and procedures.
- b.** Notify key staff.
- c.** Notify the appropriate organizations.
- d.** Prepare and update necessary information for release to the public.
- e.** Activate the appropriate Emergency Operations Center(s).
- f.** Initiate mitigation and preparedness programs to reduce the effects of the disaster.
- g.** Initiate all record keeping, data collection and control measures as needed.

3. Response – Emergency Period

When a disaster strikes, all agencies with emergency responsibilities shall:

- a.** Initiate and conduct disaster response operations in accordance with established practices.

- b. Coordinate their response with all involved agencies and jurisdictions through the City EOC.
- c. Keep the public and government officials advised of the actions taken.
- d. Assess and evaluate the effectiveness of emergency response efforts and establish priorities in the application of resources.

4. Recovery Phase

After the threat to life and property has passed those agencies involved in the response shall:

- a. Obtain detailed damage assessment information.
- b. Coordinate the application of resources to meet the long-term needs of the city with the CEMO.
- c. Identify deficiencies in response, conduct after-action critiques and implement actions for improvement.

V. ORGANIZATION AND RESPONSIBILITIES

A. Organization

1. The Revised Code of Washington (RCW) 38.52 authorizes two or more political subdivisions to join in the establishment and operation of a joint local organization for emergency management. The Snohomish County Department of Emergency Management was created pursuant to Chapter 38.52 of the RCW with the specific enabling declaration occurring in RCW 38.52.020 and the Washington Administrative Code (WAC) 118-06-040.
2. The Snohomish County Department of Emergency Management (DEM) is charged with the responsibility of coordinating the disaster mitigation, preparedness, response and recovery efforts of its member agencies under the direction and control of the Emergency Management Council. DEM's jurisdiction includes all unincorporated Snohomish County and the cities and towns of Arlington, Darrington, Everett, Gold Bar, Granite Falls, Index, Lake Stevens, Marysville, Monroe, Mukilteo, Snohomish, Stanwood and Sultan.
3. DEM's governing body is the Emergency Management Advisory Board and is comprised of the County Executive and the Mayors or designated officials of the thirteen member cities.
4. The Mayor is responsible, by law, for the disaster operation within the respective jurisdiction.
5. The City of Gold Bar's Emergency Management Coordinator acts as the staff advisor to city officials and to DEM during disaster operations using the Incident Command System.

6. The City of Gold Bar government will retain the authority and responsibility for direction and control of its own disaster operations. This includes the use of resources and the application of mutual aid resources.
7. Disaster operations will be coordinated with the Snohomish County Department of Emergency Management and conducted by the city forces, supplemented as necessary by trained auxiliaries and by manpower available within the local and at the county level.

B. Responsibilities

1. Municipal and County Government

- a. The Mayor and city elected officials:
 1. Establish policy and make major decisions.
 2. Direct emergency operations and provide liaison.
 3. Preserve the continuity of the executive branch of government.
 4. Issue proclamations of emergency and requests for assistance.
 5. Request additional assistance through Snohomish County Department of Emergency Management.
 6. Direct the implementation of emergency response and recovery.
- b. Legislative Branch of the City of Gold Bar (City Council)
 1. Adopt and enact ordinances/resolutions and appropriate revenue.
 2. Conduct public hearings and take action to assist in informing the public and to identify emergency needs.
 3. Provide for the continuity of the legislative branch and temporarily fill any vacancy of an elected position by appointment.
- c. The City of Gold Bar EM Coordinator (CEMC) in coordination with Snohomish County DEM shall:
 1. Be responsible for the current update of the Plan.
 2. Coordinate emergency activities of local agencies in preparation for and responding to a disaster.
 3. Provide communications coordination for response agencies during a disaster.
 4. Assist elected officials by providing staff assistance in a disaster.
 5. Act as the sole contact point for requesting disaster assistance from other governmental agencies (except mutual aid).

6. Prepare damage assessment, incident or disaster analysis reports as necessary.
7. Warn the public of impending disasters, to include adequate instructions before, during and after emergencies.
8. Provide reconnaissance and field operations teams.
9. Provide public information and education as it pertains to disaster preparedness and response.
10. Coordinate the use of all available resources.
11. Maintain current Stand Operating Procedures (SOPs) for the City of Gold Bar EM Office (CEMO) disaster responsibilities.

d. Law Enforcement shall:

1. Use appropriate crown and traffic control procedures to limit access to the disaster area.
2. Assist in warning and carry out the evacuation of citizens from the affected area.
3. Maintain law and order including physical security in and around the affected area.
4. Provide incident command for law enforcement oriented disasters.
5. Carry out search and rescue missions as necessary.
6. Provide damage assessment reports.
7. Develop procedures for the mass arrest and detention of prisoners.
8. Maintain current suggested operating procedures for disaster responsibilities.

e. Fire Services shall:

1. Control fires and secure hazardous materials scenes.
2. Provide on-scene medical assistance.
3. Assume incident command.
4. Provide on-scene search, rescue and extrication operations.
5. Assist law enforcement, as necessary, in warning and evacuation operations.
6. Provide damage assessment reports.
7. Maintain current suggested operating standards for disaster responsibilities.

8. Provide HAZMAT teams to handle hazardous materials incidents.
 9. Designate Unified Commander.
- f. Public Works shall:
1. Maintain/repair major thoroughfares and bridges for emergency vehicles.
 2. Provide refuse and debris removal and/or disposal.
 3. Keep storm, sanitary sewer and water systems in operation.
 4. Provide barricades and other traffic control equipment as needed.
 5. Provide equipment and operators to assist in other emergency situations.
 6. Provide damage assessment reports.
 7. Provide information on road conditions and status.
 8. Maintain current suggested operating procedures for disaster responsibilities.
 9. Assist in the City of Gold Bar EOC, if requested.
- g. Public Health is the responsibility of Snohomish County, which shall be responsible for the following in coordination with the City of Gold Bar:
1. Manage disease control and immunizations programs.
 2. Supervise the food and water quality control program.
 3. Coordinate the disposal of dead animals.
 4. Advise on public health matters as requested.
 5. Maintain current suggested operating standards for disaster responsibilities.
 6. Assist in the City of Gold Bar EOC, if requested.
- h. Assessor and Clerk-Treasurer shall:
1. Remove and secure public records as necessary.
 2. Assist in the City of Gold Bar EOC, if requested.
- i. Department of Finance/Treasurer/City Clerk shall:
1. Ensure disaster-related expenditures are made in accordance with applicable laws, regulations and accounting procedures.

2. Remove and secure public records as necessary.

j. City of Gold Bar Emergency Operations Center:

1. Activation of the Emergency Operations Center requires notification of the following personnel or their immediate subordinates to report to the Center:

- Mayor
- Snohomish County Sheriff - Chief of Police – Gold Bar Region
- Public Works Director
- City Clerk
- Office Manager/ACO/EMC
- Snohomish County Fire District (SCFD) #26 Fire Chief
- Snohomish County Department of Emergency Management

2. The Unified Commander is designated by the Fire Department and will be responsible for opening the Emergency Operations Center. Depending on the type of emergency, the Unified Commander will request activation of the Emergency Operations Center through the Mayor.

3. The Emergency Operations Center will be located at SCFD Station 54 if available. The alternate location for the Operations Center will be SCFD #26 headquarters at Station 53, 501 Lewis Avenue, Gold Bar.

4. Upon activation of the Emergency Operations Center, the Snohomish County Department of Emergency Management will be notified and a State Incident Number requested.

k. Proclamation of Evacuation:

WHEREAS, it has been determined that a life threatening situation exist due to _____ located a _____ the evacuation zone boundaries have been established at _____

THEREFORE, I, _____ Mayor of the City of Gold Bar, Washington, do hereby proclaim that an emergency exists within the City of Gold Bar as of this day, _____, 20____.

All residents within these boundaries are ordered to immediately evacuate according to this evacuation order. This proclamation is in effect until further notice.

Mayor, City of Gold Bar

Date

2. Other Agencies

a. Snohomish County Public Utility District (PUD) #1 shall:

1. Restore electrical power on a priority basis.

2. Repair damaged generating facilities and equipment.
 3. Remove downed electrical lines from roadways and other dangerous areas.
 4. Restore water service in its area of responsibility.
- b. Snohomish County Chapter of The American Red Cross shall:
1. Provide mass care for disaster victims including shelter and food.
 2. Assist with non-emergent health and mental health services.
 3. Assist with damage assessment.
 4. Establish a welfare inquiry system.
 5. Assist with recovery assistance for disaster victims.
- c. City of Gold Bar Water Department shall:
1. Conduct evaluation for contamination of wells
 2. Conduct emergency repairs to wells and pump stations to provide potable water to the community.
 3. Protect and prevent additional contamination to the water system.
 4. Provide damage assessments.
- d. Gold Bar Elementary School
1. Gold Bar Elementary School is a designated Red Cross Shelter and evacuation center that, if needed, will be utilized by the American Red Cross.

VI. ADMINISTRATION AND LOGISTICS

A. Administration

1. All organizations with disaster responsibilities shall establish and maintain files of disaster related directives and forms.
2. Reports may be requested by Snohomish County DEM from local jurisdictions and agencies in order to provide local, state and federal officials with information concerning the nature, magnitude and impact of the disaster. These reports may be necessary to evaluate response options and in allocating resources on a priority basis.
3. Snohomish County DEM will be requested by Washington State EMD to provide specific reports and the City of Gold Bar EMC will, in turn, request the information from their agencies.

These reports include, but are not limited to:

- a. Situation Reports
 - b. Proclamation of Emergency
 - c. Requests for Assistance
 - d. Damage Assessment Reports
4. The City of Gold Bar EMO will utilize emergency workers in accordance with RCW 38.52.
 5. The Mayor may command the service and equipment of citizens under the provisions and limitations of RCW 38.52.110 (2).
 6. Emergency workers utilized as outlined in WAC 118-04 shall be granted liability insurance coverage provided they meet all legal provisions.

B. Financial Management

1. Emergency expenditures are not normally integrated into the budgeting process of local governments. However, disasters occur requiring substantial and necessary unanticipated obligations and expenditures. The following statutes cover the financing of emergency response and recovery actions:
 - a. Counties: RCW 36.40.180 and 36.40.190.
 - b. Cities under 300,000 population: RCW 35.33.081 and 35.33.101.
 - c. Municipal and county governments are authorized to contract for construction or work on a cost basis for emergency services by RCW 38.52.390.
 - d. RCW 38.52.070 (2) Power to enter into contracts and incur obligations necessary to combat disaster, protecting the health, safety and property, and providing emergency assistance to the victims of disaster.
2. Records shall be kept so disaster related expenditures and obligations of the county, cities and towns can be readily identified from regular or general programs and activities.
3. Disaster related expenditures and obligations of the county, cities and towns may be reimbursed under a number of federal programs. Reimbursement of approved costs for work performed in the restoration of certain public facilities may be authorized by the federal government after a Major Disaster declaration by the President or under the statutory authority of certain federal agencies.
4. Audits of the county's, cities' and towns' disaster related emergency expenditures will be conducted in the course of normal audits of state and local records. Audits of projects approved for funding with federal disaster assistance funds are necessary at project completion to determine the propriety and eligibility of the costs claimed by the applicant. These audits are conducted by the federal government.

C. Logistics

1. Coordination for maximum utilization of a limited supply of disaster related resources is a primary duty of the City of Gold Bar EMC in coordination with Snohomish County DEM.
2. Each agency of the city shall keep a current inventory of all resources that may be called upon for use in disasters. This inventory shall be provided to the City of Gold Bar EMC, in coordination with Snohomish County DEM, upon request and updated as necessary.

VII. Direction and Control

A. General

1. Direction and control of emergency services within the City of Gold Bar rests with the mayor and/or City Manager/Administrator, in coordination with Snohomish county DEM.
2. During emergencies Snohomish County DEM shall be responsible for overall coordination of the County EOC utilizing the Incident Command System.
3. The Mayor and/or City Manager/Administrator, upon determining that a disaster exists within their jurisdiction with the potential to affect life, property or the public peace may, under RCW 35.33.081 or RCW 36.40.180 and RCW 38.52.070(2), proclaim a state of emergency.

B. Coordination

1. During disasters the City of Gold Bar EMC, in coordination with Snohomish County DEM, provides an organized channel for bringing together those citizens and public entities with disaster related needs and those having the necessary capabilities and resources to meet such needs.
2. Snohomish County DEM maintains a mobile command post for supplementing on-scene communications and coordination.

C. Facilities

1. The City of Gold Bar EMO has established the Snohomish County Fire District #26 Station 54, located at 42013 US 2 as a central facility for coordination for this city, telephone 360-793-1078.
2. Suggested operating procedures have been adopted and are maintained to ensure the city EOC is adequately staffed and equipped to be immediately available in time of need.
3. In the event a disaster renders the city EOC unusable, the following location will be used as an alternate EOC:
 - a. The Snohomish County Fire District #26 Headquarters, located in Station 53, at 5th and Lewis in Gold Bar, telephone 360-793-1335.

**APPENDIX 1
DIRECTION AND CONTROL
EMERGENCY OPERATIONS CENTER (EOC)**

I. PURPOSE

To provide for the effective direction, control and coordination of emergency operations. This function involves the use of a centralized management center, the EOC, to facilitate policy making, coordination and control of operation forces and resources in a large-scale emergency situation.

II. OPERATION CONCEPTS

- A.** Direction and control of emergency services functions is the responsibility of the Mayor. Delegation of that responsibility shall be in writing and a copy sent to the Snohomish County Department of Emergency Management (DEM).
- B.** During disasters and catastrophic events the City of Gold Bar EMO, in coordination with the Snohomish County DEM, provides an organized channel for coordinating response and resources to the event.
- C.** Depending on the severity of the emergency or disaster, the City of Gold Bar Emergency Operations Center (EOC) may be activated and will coordinate requests for assistance and information. The city may defer their activation to the Snohomish County Department of Emergency OOC upon request.
- D.** Upon activation of the City Emergency Operation Center (EOC), representatives of emergency response and support agencies will be requested to report to the operations center to make decisions and coordinate efforts and resources in response to the emergency/disaster.
- E.** Communications utilized during emergency and disaster operations will include all systems now in use by all response agencies and emergency support units.
- F.** Agency two-way radio communications will be the primary means of communication used to direct, control and coordinate emergency operations. Telephone and amateur radio systems will be used when necessary to support communications.
- G. Facilities**
 - 1.** The City of Gold Bar will establish an EOC to serve as a central coordination point. Operation procedures will be maintained to adequately staff and support the EOC to ensure efficient operations.
 - 2.** The EOC will be equipped with information, display materials, internal communications and any additional equipment, materials and supplies required to ensure efficient operations.

The primary location for the EOC will be located at 42013 US 2, Snohomish County Fire Department #26 Station 54, telephone 360-793-1078.

3. The alternate location for the EOC will be located at Snohomish County Fire District 326 Headquarters in Station 53, at 501 Lewis Avenue, telephone 360-793-1335.
4. The City of Gold Bar shall activate an EOC to be used in local emergencies. When it appears that the magnitude of the emergency may reach beyond the local EOC capability, the County EOC will be activated.
5. Each response and support agency that is identified to have a role within the EOC will be responsible for material, supplies and communications to support the EOC function.

III. RESPONSIBILITIES

- A. The City of Gold Bar Emergency Management Coordinator (CEMC) shall have the responsibility for coordinating all local government activities taken to prevent, respond to and recover from imminent threat of, or an emergency, disaster, and/or catastrophic event.
- B. Private and public agencies that respond to or support emergency operations will identify liaison personnel to work with the City of Gold Bar EM and support EOC operations. Each agency will provide a list of those identified and how to contact them in the event of EOC activation. (Annex A to this Appendix.)

IV. ANNEXES

- A. Emergency Operations Center Representatives
- B. Municipal Emergency Operations Center Location/Points of Contact

ANNEX A TO APPENDIX 1 EMERGENCY OPERATION CENTER REPRESENTATIVES

1. **City of Gold Bar Mayor:** **Office: 360-793-1101**
Steve Yarbrough **Cell: 425-238-2655**

2. **City of Gold Bar** **Emergency: 9-1-1**
Police Chief: **Non-Emergency: 425-407-3999**
Craig Hess **Cell: 425-508-8286**

3. **City of Gold Bar** **Office: 360-793-1101**
Public Works Director: **Cell: 425-238-4649**
Rich Norris

4. **City of Gold Bar** **Cell: 425-238-1935**
Water Department:
Richard Baker

5. **City of Gold Bar** **Office: 360-793-1101**
City Clerk:
Lisa Stowe

6. **City of Gold Bar** **Office: 360-793-1101**
Office Manager/ACO/EMC: **Cell: 425-238-1815**
Denise Beaston

7. **Snohomish County** **Emergency: 9-1-1**
Fire District #26 **Station 53 (Lewis & 5th St): 360-793-1335**
Fire Chief: **Station 54 (42013 US 2): 360-793-1078**
Eric Andrews

8. **DEM** **Office: 425-388-5060**

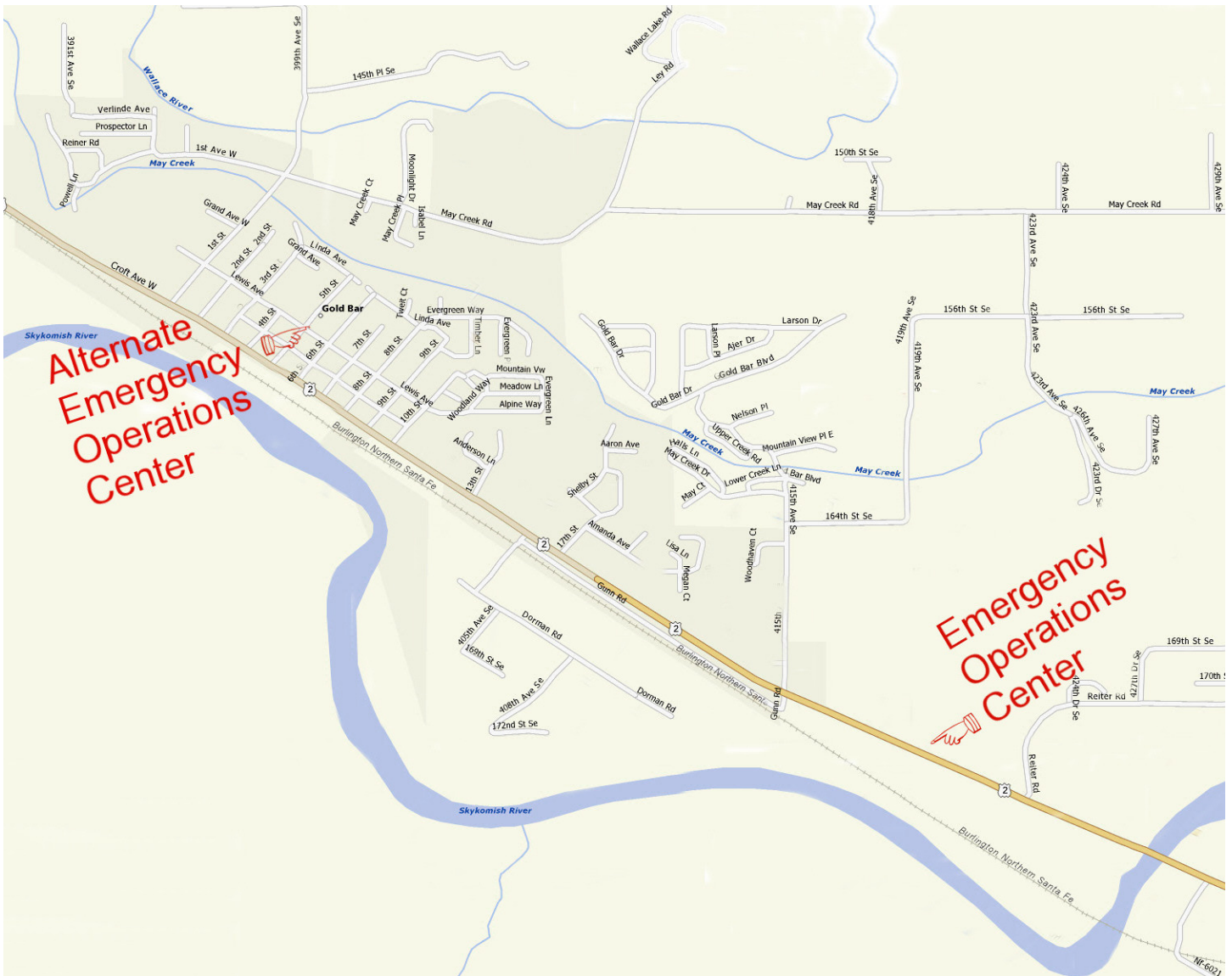
*** Official number for departments to be used for all normal business. Home and cell numbers are for emergency use only.**

ANNEX B TO APPENDIX 1

MUNICIPAL EMERGENCY OPERATIONS CENTER LOCATION/POINTS OF CONTACT

The Emergency Operations Center will be located at Snohomish County Fire District #26 Station 54, 42013 US 2. The alternate location for the Operations Center will be Snohomish County Fire District #26 Headquarters in Station 53 at 501 Lewis Avenue. Phone number 360-793-1335.

SITE MAP



APPENDIX 2 CONTINUITY OF GOVERNMENT

I. PURPOSE

To ensure the continued operation of local government during and after disasters. Identify alternates to elected and executive officials and alternate locations for vital government operations.

II. OPERATIONAL CONCEPTS

- A.** The chief elected officials of each jurisdiction shall list their two legal alternates (Annex A).
- B.** Each elected official and alternate shall be familiar with their emergency responsibilities.
- C.** The executive head of all departments and agencies with emergency responsibilities shall designate two alternates. (Annex B)
- D.** The executive head or alternate shall be familiar with their emergency responsibilities.

III. RESPONSIBILITIES

- A.** Elected officials and executive heads of all political subdivisions, departments and agencies will ensure that essential records are identified, preserved and adequately protected.
- B.** Elected officials, with the help of executive department/agency heads, will identify essential services and develop and maintain plans for alternate locations for vital government operations.
- C.** Each elected official and executive department/agency head will identify in writing their alternates with procedures for twenty-four (24) hour notification.

IV. ANNEXES

- A.** Roster of Elected Officials and Alternates
- B.** Roster of Department and Agency Heads and Alternates

**ANNEX A
ROSTER OF ELECTED OFFICIALS AND ALTERNATES**

Telephone Numbers

City of Gold Bar City Hall: **Office: 360-793-1101**
Fax: 360-793-2282
8-12am & 1-5pm, Monday – Friday,
Excluding holidays
Website: www.cityofgoldbar.us

Mayor: Steve Yarbrough **Cell: 425-238-2655**
Email: mayor@cityofgoldbar.us

Council Members: **For Non-Emergency Please call: 360-793-1101**

Pos. 1: Demetria (Demi) Phillips **Email: d.phillips@cityofgoldbar.us**

Pos. 2: Lee Russell **Email: l.russell@cityofgoldbar.us**

Pos. 3: Florence (Davi) Martin **Email: d.martin@cityofgoldbar.us**

Pos. 4: Chuck Lie **Email: c.lie@cityofgoldbar.us**
Mayor Pro-Tem

Pos. 5: Jordan Sears **Email: j.sears@cityofgoldbar.us**

*** Official number for Mayor and Council Members to be used for all normal business. Home and cell numbers are for emergency use only.**

**ANNEX B
ROSTER OF DEPARTMENT AND AGENCY HEADS AND ALTERNATES**

Telephone Numbers & Email Addresses

City of Gold Bar City Hall: Office: 360-793-1101
Fax: 360-793-2282
8-12am & 1-5pm, Monday – Friday,
Excluding holidays
Website: www.cityofgoldbar.us

Clerk-Treasurer: Office: 360-793-1101
Lisa Stowe Email: clerk.treasurer@cityofgoldbar.us

Public Works Director: Office: 360-793-1101
Rich Norris Cell: 425-238-4649
Email: r.norris@cityofgoldbar.us

Water Department Issues: Cell: 425-238-1935
Richard Baker Email: Maintenance@cityofgoldbar.us

Office Manager/ACO/EMC: Office: 360-793-1101
Denise Beaton Cell: 425-238-1815
Email: d.beaston@cityofgoldbar.us

City of Gold Bar Non-Emergency: 425-407-3999
Police Chief: Cell: 425-508-8286
Craig Hess Email: Craig.Hess@snoco.org

* Official number for departments to be used for all normal business. Home and cell numbers are for emergency use only.

APPENDIX 3 EMERGENCY RESOURCE MANAGEMENT

I. PURPOSE

To identify emergency resource needs, local resources and to provide a system for prioritization, utilization and reimbursement of those resources during times of emergency.

II. OPERATIONAL CONCEPTS

- A.** To assure that up-to-date listings are maintained of the exact resources capability of local jurisdictions and the private sector.
- B.** To prioritize, allocate and conserve local resources to serve the greatest good.

III. RESPONSIBILITIES

- A.** The City of Gold Bar EMC will collect and maintain a database of resources identified by jurisdictions and agencies that may be required during emergency, disaster and catastrophic events to save lives and mitigate damage.
- B.** Public and private agencies and departments will provide the City of Gold Bar EMO an up-to-date list of resources (including equipment, materials and labor) that will be maintained in the database.

**ANNEX A TO APPENDIX 3
EMERGENCY RESOURCE LIST**

1. HEAVY EQUIPMENT

A. City owned Equipment:

- 1 ea 5-6 cubic yard dump truck
- 1 ea Case Back Hoe
- 1 ea Street sweeper

B. Privately owned equipment

Two gravel quarries are located just to the east of the City of Gold Bar. These quarries utilize heavy equipment for daily operations. Front end loaders are used daily in their operations. During an emergency the City could utilize this equipment.

2. GENERAL EQUIPMENT

C. City owned Equipment:

- 2 ea Small generator and lighting equipment
- 3 ea Pickup trucks
- Numerous small hand tools
- Numerous traffic control signs

D. The City of Gold Bar has supplies for sheltering which include:

- 238 GI Disaster Blankets/Emergency Blankets
- 8 Coleman Cots
- 4 Universal Enclosed 10x20' Canopy's
- 4 Trauma Kits
- 9 30 Person Corporate Kits includes toiletries for 30
- 10 Cases Bottled Water

3. FOOD AND BEVERAGE

- A.** Three food markets are located within the city limits.
- B.** Three restaurants are located within the city limits.

4. ANIMAL CONTROL

- A.** The city does employ its own animal control officer and has a small shelter to contain animals.

**APPENDIX 4
EMERGENCY PUBLIC INFORMATION**

I. PURPOSE

To provide and maintain a program for the coordinated dissemination of emergency information and instructions to the public.

II. OPERATIONAL CONCEPTS

- A.** Public information provides people with direction regarding when and how to prepare and to recover from an emergency, disaster or catastrophic event.
- B.** A public information program shall include the dissemination of accurate, timely and comprehensive information which:
 - 1. Promotes personal safety, survival and personal/public health;
 - 2. Offers advice on protection of private property;
 - 3. Provides accurate information on the actions of government and the expected role of citizens;
 - 4. Neutralizes rumors; and
 - 5. Outlines assistance programs offered by local, state, federal and volunteer agencies.
- C.** The City of Gold Bar, along with Snohomish County DEM and the Disaster Assistance Council (DAC), will coordinate long-term education efforts with all public and private agencies and departments.
- D.** The City of Gold Bar, in coordination with Snohomish County DEM, shall control and release all public information statements through the Snohomish County EOC during an emergency, disaster or catastrophic event with the exception of the American Red Cross.
- E.** American Red Cross operates under its own national guidelines regarding public information. The American Red Cross will generate and disseminate all public information regarding Red Cross operated mass care facilities.

III. RESPONSIBILITIES

- A.** The city of Gold Bar EMO will develop and maintain a Public Information Policy and Plan that includes each jurisdiction and public agency/department with a responsibility in time of emergency, disaster or catastrophic event.
- B.** The City of Gold Bar EMO, in coordination with Snohomish County DEM, will establish a public information center as soon as an emergency, disaster or catastrophic event is declared.

APPENDIX 5 TRAINING AND EDUCATION

I. PURPOSE

To provide an adequate training and education program that ensures maximum readiness of local government officials, employees and volunteers who are assigned emergency responsibilities.

II. OPERATIONAL CONCEPTS

- A.** Emergency preparedness education, training and exercises are vital to facilitate the effectiveness of Emergency Plans. It also assures that operational concepts are sound and that resources are adequate to carry out necessary functions in time of emergency, disaster or catastrophic events.
- B.** Education and training of emergency response personnel takes place at all levels of government and in volunteer organizations to enhance decision making capabilities and familiarity with operation concepts and procedures.
- C.** Exercising Plans determines the effectiveness and feasibility of Plans and Standard Operating Procedures.
- D.** Tabletop exercises will be conducted on an annual basis. Function exercises will be conducted on no less than an alternating bi-annual basis. Critiques and evaluations will follow each exercise.
- E.** Drills are supervised instructional sessions devised to maintain and develop skills in a specific area. Drills may be an element of an exercise.
- F.** The City of Gold Bar Emergency Management Office (CEMO) will utilize all staff in designing, executing, evaluating training, exercises and drills. Snohomish County Department of Emergency Management can assist with the development and execution of these exercises and drills.

III. RESPONSIBILITIES

- A.** The City of Gold Bar Emergency Management Office (CEMO)
 - 1.** Develop special training programs that address but are not limited to fire, earthquake, severe weather, flooding, hazardous materials and other significant hazards to the City, in coordination with Snohomish County DEM.
 - 2.** Determines local training requirements as appropriate.
 - 3.** Trains emergency management volunteers and workers.
 - 4.** Exercises local Emergency Management Plans and Standard Operating Procedures.

B. Other Response Agencies

- 1.** Coordinate with Snohomish County Department of Emergency Management to develop and implement on-going disaster training and education programs and participate in regular exercises of Emergency Management Plans and programs.
- 2.** Conduct training on an on-going basis to maintain readiness.

DISASTER ANNEX A NATURAL AND MAN-MADE DISASTERS

1. PREFACE

The City of Gold Bar must be prepared for a significant emergency of region-wide disaster and be able to respond using only those resources located with the City of Gold Bar in the most efficient manner. A disaster or emergency could cause the City to be isolated for a period of several days and exist solely on its own resources.

2. THE INDIVIDUAL ROLE

Often overlooked in emergency preparedness is the role of the individual citizen. It is their life, property and well-being which are threatened by agents of disaster. Although resources can be limited, it is the responsibility of each citizen to personally be prepared and to prepare their family to meet emergency situations.

One of the key tasks of government at all levels is to assist individuals in identifying the hazards they face and to assist them in the steps that can be taken to protect their own life and the lives of those near them, and to prevent to the greatest degree possible loss of personal property. However, all government efforts to provide such assistance will be useless if individuals do not take the threat of disaster, and their role in responding to that threat, seriously. Too many times, warnings are ignored and lives and property are needlessly lost because individuals feel "It can't happen to me." The sad truth is it does and probably will happen.

3. GENERAL

The disaster plan has been established to protect the citizens of Gold Bar in the event of a disaster, whether natural or man-made.

The definition of a disaster as used in this plan is: An incident of large enough magnitude that the incident cannot be handled through established departmental operating procedures and the local resources will be overwhelmed.

4. CITY OF GOLD BAR EMERGENCY OPERATIONS PLAN

The plan is intended to produce a chain of command using the Incident Command System that allows the various City departments and outside agencies to work in harmony with each other.

5. NATURAL AND MAN-MADE DISASTERS

For the purpose of this policy, natural and man-made disasters include earthquakes, floods, fires, airplane crashes, weather conditions, chemical spills, major explosions or other catastrophe, emergency of situation in any part of the city which, in the judgment of the City's Elected Officials, threaten or actually cause damage of sufficient severity and magnitude to warrant execution of this policy.

6. EMERGENCY OPERATIONS CENTER

- A.** The City's Unified Commander is assigned by the Fire Chief and will be responsible for opening the Emergency Operations Center. Depending on the type of emergency, the Unified Commander will request activation of the Center through the Mayor of Gold Bar.
- B.** Activation of the Emergency Operations Center requires notification of the following personnel or their immediate subordinates to report to the center.
 - 1. Mayor
 - 2. Snohomish County Sheriff
 - 3. Fire District #26 Chief
 - 4. Public Works Director
 - 5. City Clerk
 - 6. Utility Clerk/ACO/EMC
- C.** Upon activation of the Emergency Operations Center, the Snohomish County Department of Emergency Management will be notified and a State Incident Number requested.
- D.** The Emergency Operational Center shall remain operational until such time the Incident Commander makes the decision for its closure.

7. RESPONSIBILITIES

Following is a list of Emergency Management Disaster Positions. Listed under positions are duties and responsibilities assign to that position.

A. Mayor or Designee

- 1. Will issue declaration of disaster if necessary.
- 2. Is responsible for all public information and press releases.
- 3. Will notify Snohomish County Department of Emergency Management in obtaining a mission number and be available to support if needed.
- 4. Coordinates operations out of the Emergency Operational Center utilizing the Incident Command System.
- 5. The Mayor/City Council is the final approving body for administration during a major emergency or disaster.

B. Unified Commander

- 1. Will take full command of the incident until relieved by a senior officer.
- 2. Will delegate responsibilities to Emergency Operational Center Personnel.

3. Will review all information obtained by field personnel and make decisions based on those findings.
4. The Unified Commander must determine what type of incident is in progress, severity of the incident, areas affected by the incident and areas that may become affected. While determining the area affected, the Unified Commander will be gathering information about injuries, safety issues, damage, road closures, fires, other hazards or potential hazards.
5. After gathering such information as needed, the Unified Commander must institute a plan to notify the public about the disaster. The public must be informed about any action they need to take. Some tasks to take into consideration are evacuation, transportation, communications, food and shelter.
6. It is the responsibility of the Unified Commander, along with other Emergency Operation Center personnel, to institute a plan of action to bring the situation under control. Personnel at the Center must research what resources and manpower are available to help accomplish this task. If needed, these resources and manpower will be utilized to their maximum.
7. Once it has been determined that the disaster has been neutralized, at the discretion of the Unified commander, consideration should be given to providing relief to emergency personnel. Consideration should also be given to the appropriate time to allow safe public access to the impacted area.
8. The Unified Commander is responsible for assigning personnel to post occurrence duties and activities depending on the stage of de-escalation of the disaster. Consideration is to be given to continued maintenance and security of the impacted area.
9. After de-escalation of the disaster, the Unified Commander will decide when to cease operations of the Emergency Operations Center.

C. City Clerk

1. Will provide a representative to the Emergency Operations Center to coordinate city finance resources and prioritization of response.
2. Provide office personnel and switchboard operations at City Hall.
3. Will be responsible for the financial records and documentation at the Emergency Operations Center.
4. Establish priorities for removal and safety of public records.
5. Removal and relocation of these records if necessary.
6. All documentation at the Emergency Operations Center as needed.
7. Assisting in the evacuation center or staging areas as needed.
8. Provide staff services.

D. Public Works Director

1. Maintain/repair major thoroughfares and bridges for emergency vehicles.
2. Will provide refuse and debris removal and/or disposal.
3. Will keep storm and water systems in operation.
4. Will provide barricades and other traffic control equipment as needed.
5. Will provide equipment and operators to assist in other emergency situations.
6. Will provide damage assessment reports, as necessary.
7. Will provide information on road conditions and status.
8. Will maintain current suggested operating procedures for disaster responsibilities.
9. Will assist in the City of Gold Bar EOC, if requested.

E. Law Enforcement

1. Will use appropriate crowd and traffic control procedures to limit access to the disaster area.
2. Assists in warning and the evacuation of citizens from the affected area. The following are suggested evacuation routes to be evaluated by law enforcement and suggested to the Unified commander. The Unified Commander should give consider to the most appropriate and safest route of evacuation from the list below:
 - a. Orchard Avenue East or West to intersecting North and South streets (3rd and 10th Streets), South to US 2.
 - b. Lewis Avenue East or West to intersecting North and South streets (1st and 10th Streets), South to US 2.
 - c. Orchard Avenue West to 3rd Street, North to Lewis Street, West on Lewis Avenue to 1st Street, North on 1st Street to May Creek Road, East on May Creek Road to Reiter Road and South on Reiter Road to US 2.
 - d. Lewis Avenue West to 1st Street, North on 1st Street to May Creek Road, East on May Creek Road to Reiter Road and South on Reiter Road to US 2.
3. Maintain law and order and provide physical security in and around the affected area.
4. Provide incident command for law enforcement oriented disasters.
5. Carry out search and rescue missions.
6. Provide damage assessment reports, as necessary.

7. Develop procedures for the mass arrest and detention of prisoners.
8. Maintain current suggested operating procedures for disaster responsibilities.
9. The Snohomish County Sheriff's Department will be the responsible agency in check the welfare of the elementary school students and staff. This task shall be performed at the earliest possible time.

F. Public Information Officer

1. Shall be designated by the Unified Commander and stationed at an outer perimeter of the incident. It is the duty of the Public Information Officer to provide information pertaining to the incident, as directed by the Incident Commander, to the media and general public.

8. POST OCCURRENCE DUTIES

The unified Commander is responsible for assigning personnel to post occurrence duties and activities depending on the stage of de-escalation of the disaster. Consideration should be given to continued maintenance and securing of the impacted area, and to the availability of manpower; taking manpower fatigue into consideration. The Unified Commander is responsible for ensuring a complete and detailed log of the disaster is maintained throughout the incident. The log, converted to a report, will be completed and made available to the Chief of Police and the Public Information Officer within 24 hours of the termination of the disaster.

DISASTER ANNEX B EVACUATION ROUTES – MAPS
--

1. PREFACE

The City of Gold Bar must be prepared for a significant emergency or region-wide disaster and be able to evacuate when the need arises.

2. RESPONSIBILITIES

The Unified Commander shall be responsible for determining if any type of evacuation is needed during any type of disaster. After compiling information from subordinates the Unified Command shall determine the safest route for evacuation. Law Enforcement Personnel shall assist in warning and the evacuation of citizens from the affected area.

3. EVACUATION ROUTES

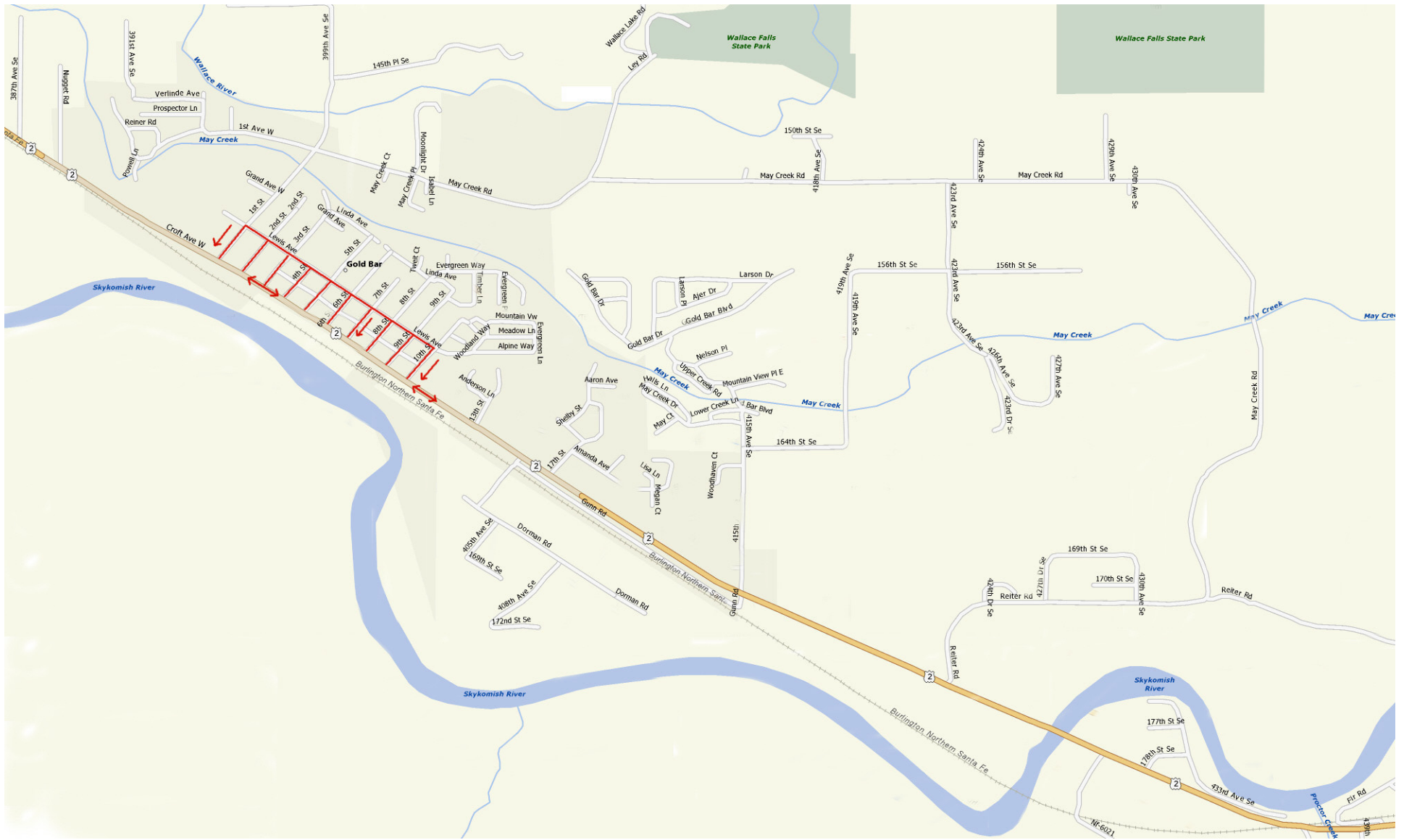
The following suggested evacuation route to be consider by the Unified Commander:

- A.** Orchard Avenue East or West to intersecting North and South streets (3rd and 10th Streets), South to US 2.
- B.** Lewis Avenue East or West to intersecting North and South streets (1st and 10th Streets), South to US 2.
- C.** Orchard Avenue West to 3rd Street, North to Lewis Street, West on Lewis Avenue to 1st Street, North on 1st Street to May Creek Road, East on May Creek Road to Reiter Road and South on Reiter Road to US 2.
- D.** Lewis Avenue West to 1st Street, North on 1st Street to May Creek Road, East on May Creek Road to Reiter Road and South on Reiter Road to US 2.



EVACUATION ROUTE – A

Orchard Avenue East or West to intersecting North and South streets
 (3rd and 10th Streets)
 South to US 2



EVACUATION ROUTE – B

Lewis Avenue East or West to intersecting North and South streets
 (1st and 10th Streets)
 South to US 2.



EVACUATION ROUTE – C

Orchard Avenue West to 3rd Street, North to Lewis Avenue
 West on Lewis Avenue to 1st Street, North on 1st Street to May Creek Road
 East on May Creek Road to Reiter Road and South on Reiter Road to US 2.



EVACUATION ROUTE – D

Lewis Avenue West to 1st Street, North on 1st Street to May Creek Road
 East on May Creek Road to Reiter Road and South on Reiter Road to US 2.

This page is here for page breaks required to insert landscape orientation in an otherwise portrait oriented document. No need to print this page.

Pages 32 through 35 show images in landscape.

This document forms a platform for revising the current, however out-dated, City of Gold Bar 2002 Comprehensive Emergency Management Plan.

The first two pages of this document are unnumbered as they are the cover page and the City of Gold Bar resolution adopting this Plan.

Also see file CEMP12-03.pdf – this is an Adobe Acrobat file that forms the Snohomish County CEMP, revised in December of 2003. It contains a somewhat different list of abbreviations than does the original Gold Bar 2002 document. I copied those into this document.

I took some liberty in revising a few areas of the existing Gold Bar document. However, this document should be gone through extensively to check for typographical errors and to check for proper revision. Specifically, one area of the original document refers to “successors” to the officials and employees of the City; I placed the word “alternates” in those places. If someone were to die in an emergency then I guess successor would be the more appropriate term.

The remaining images on the CD were used in developing the map pages. The maps were downloaded in small quadrants from Map Quest and cloned together to produce a higher resolution. No credit has been placed on the maps.

Ray Coleman 793-3889