



SHORELINE MASTER PROGRAM 2019 PERIODIC REVIEW

THE SHORELINE MASTER PROGRAM

The City of Gold Bar is updating the Shoreline Master Program (SMP) for the City's shoreline along Skykomish River, Wallace River, and May Creek. Required by the Shoreline Management Act (SMA), the SMP regulates the types and uses of shoreline development and provides opportunities for public access and ecological restoration.

By June 2019, the Department of Ecology requires the City to revise the SMP for consistency with new rules and guidelines that have been adopted since the time of the last SMP review in 2014. The proposed revisions, listed on this poster, are minor procedural changes that will make the document more accessible, streamlined, and reliable as the City maintains its shorelines.

PROPOSED REVISIONS

1. UPDATE DEFINITIONS

Revise the definition of *Substantial Development* to reflect the Office of Financial Management's updated cost threshold for substantial development of \$7,047. Revise the definition of *Development* to clarify that it does not include dismantling or removing structures.

2. CLARIFY PERMIT EXCEPTIONS

For clarity, reorganize the SMP with separate sections for exemptions to the SMA, exemptions to substantial development permits, and exceptions to local review under the SMA.

3. ADD ADA EXEMPTION

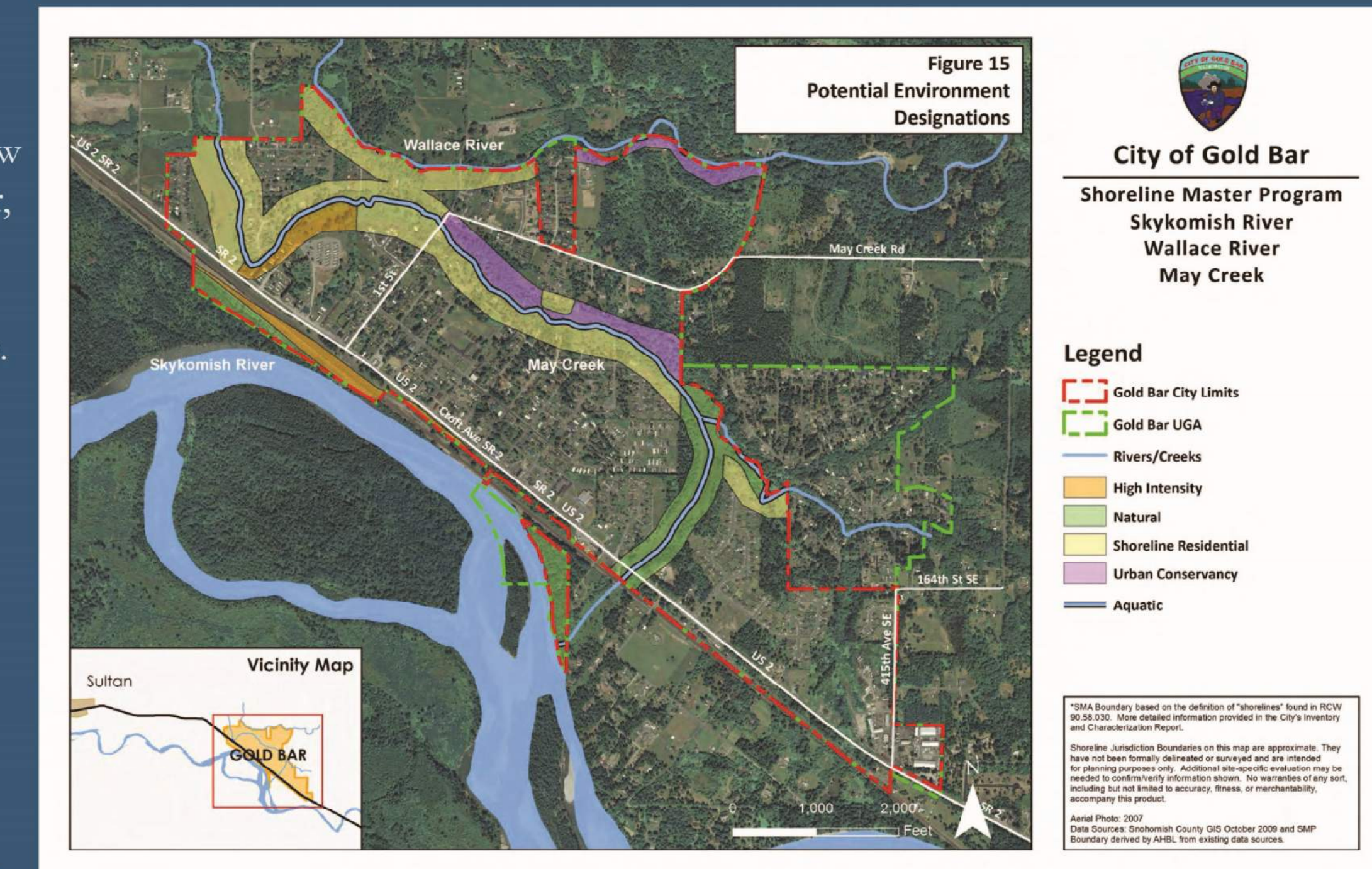
Incorporate the shoreline permit exemption for retrofitting structures to comply with the Americans with Disabilities Act, adopted by the Legislature in 2016.

4. REFERENCE WSDOT REVIEW TARGET

Incorporate a brief reference to the 90-day target for local review of Washington State Department of Transportation projects, adopted by the Legislature in 2015. This will ensure that the SMP is implemented consistent with the statute.

5. INCORPORATE 2016 CRITICAL AREAS ORDINANCE

In 2016, the City of Gold Bar adopted an update to its Critical Areas Ordinance, which regulates wetlands, streams, wildlife habitat, areas with natural hazards, and other ecologically valuable or fragile lands. Amend the SMP to reference the 2016 CAO update and incorporate a statement about mitigation banking consistent with the CAO.



Current shoreline environment designations map, last updated in 2014. No map revisions proposed during this periodic update.

THE UPDATE PROCESS

The City finalizes draft SMP amendments with input from all people, agencies, and tribes with shoreline-related interests and responsibilities



The City and Ecology jointly conduct a 30-day public comment period and public hearing on the final draft



City Council adopts the revised SMP and forwards it to Ecology for approval



Ecology approves the SMP on or before June 30, 2019

NEXT OUTREACH

The City welcomes public feedback, comments, questions, and concerns in response to these proposed changes. To stay informed of project progress and receive a red-line copy of these draft changes in the SMP document, please give your email or mailing address to City Staff or the project contact, Lauren Moore.