



*Community First*

***Sheriff Ty Trenary***

***City of Gold Bar  
In Partnership With  
Snohomish County  
Sheriff's Office***



***Mayor Lee Hodo***

***Notable Events of May 2017***

***Index***

- Disturbance – dispute over neighbor's treatment of reporting party's dog
- Noise – ongoing barking dog complaint
- Mental Health related incident – assist

***Gold Bar***

- Stolen Vehicles – a stolen vehicle from King County was recovered in the Wallace Falls Café parking lot. A stolen vehicle from the Tulalip Casino was seen at a trailer behind Last Stop Pot Shop, and person(s) in the vehicle were seen on video prowling an employee's vehicle. The vehicle was later seen in Tacoma and is still outstanding. Persons of interest have been identified.
- Case summary – 4 Assaults, 1 CPS Referral, 3 Disturbances, 1 Found Property, 1 Marine Rescue, 1 Mental Health Complaint, 1 Runaway, 2 Stolen Vehicles (see above), 2 Thefts, 1 criminal Traffic, 2 Trespassed Persons.
- **MISSING PERSONS:** SCSO is still seeking information related to missing persons Daniel Cleveland (2017), Brandon Perekz (2016), and Brian Garza (2013). Persons with information should call (425)407-3999 to report.

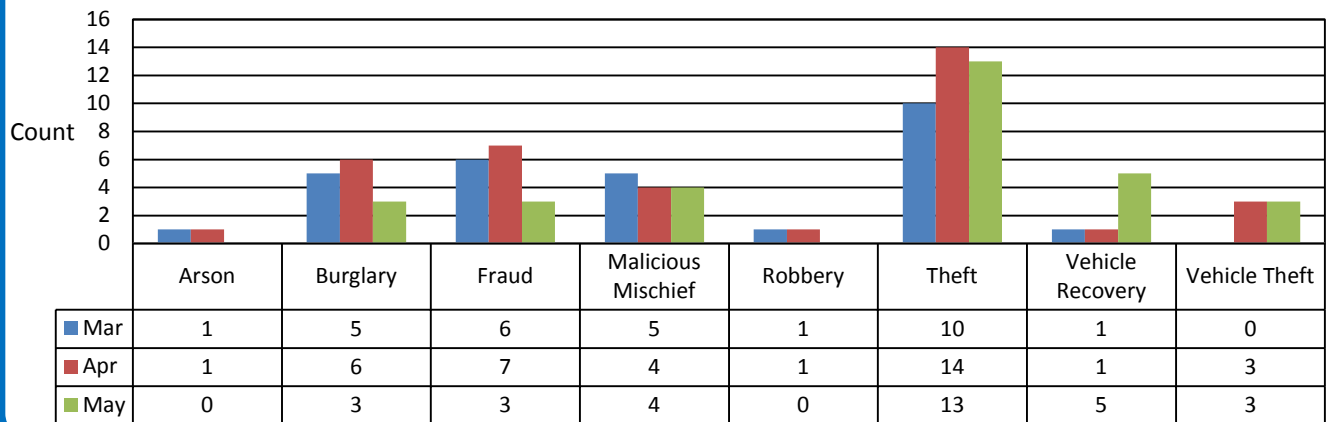
The following tables and charts compare incident types of service as reported for the Gold Bar Regional contract. This contract has an Originating Agency Identifier (ORI) of WA0311000.

### Incident Call Source by Beat

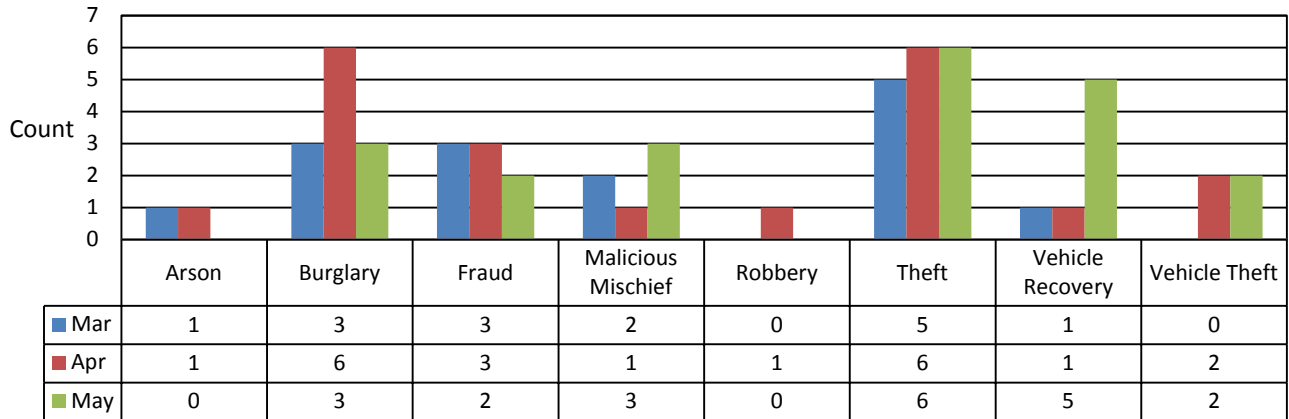
Beat & Call Source	Mar	Apr	May	Totals
GBR	145	134	153	432
911	88	81	88	257
Officer-Initiated	57	53	65	175
K2	82	91	99	272
911	64	75	75	214
Officer-Initiated	18	16	24	58
K3	120	143	134	397
911	91	112	110	313
Officer-Initiated	29	31	24	84
Other Beats	232	212	223	667
	0	1	0	1
911	88	91	100	279
Officer-Initiated	144	120	123	387
Totals	579	580	609	1768

A blank in the call source field indicates an unidentified source such as an online tip or crime report.

### Gold Bar Region Property Crime Last 3 Months - All Dispositions



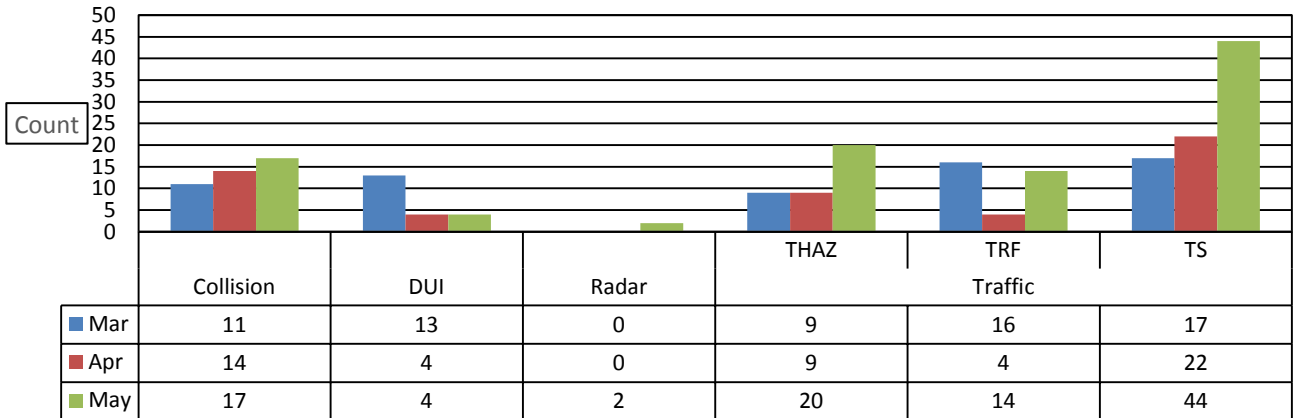
## Gold Bar Region Property Crime Last 3 Months - Dispositions A, B, I & R



➤ Note: Dispositions for any given incident may be singular or multiple, in which case they are combined in the database. Dispositions represented here, other than “all”, are those singular values and the end disposition of any combined string of dispositions.

A = Arrest, B= Booking, I = Impounded and R= Case Report

## Gold Bar Region Traffic Incidents Last Three Months - All Dispositions



THAZ = Traffic Hazard, TRF = Traffic Problem and TS = Traffic Stop.

Tickets Reported	Mar	Apr	May	Totals
Traffic Problem	2	0	0	2
Traffic Stop	4	0	5	9
<b>Totals</b>	<b>6</b>	<b>0</b>	<b>5</b>	<b>11</b>

## Incident Types – Past 3 Months

Incident Type	Mar	Apr	May	Totals
911	17	11	8	36
Abandoned Vehicle	8	10	9	27
Abuse of Person	0	1	0	1
Alarm	14	11	14	39
Animal	6	12	5	23
Arson	1	1	0	2
Assault	5	10	12	27
Assist	12	9	14	35
Attempt to Contact	0	1	0	1
Boat	0	0	1	1
Burglary	5	6	3	14
Civil	10	21	31	62
Collision	11	14	17	42
CPS	3	3	2	8
Death	0	0	2	2
Disturbance	29	25	20	74
Dive	0	1	2	3
DUI	13	4	4	21
DV	11	15	19	45
Fireworks	2	0	1	3
Follow Up	80	75	63	218
Fraud	6	7	3	16
Harassment	5	4	4	13
Information	0	2	0	2
Malicious Mischief	5	4	4	13
Mental	4	3	5	12
Noise Complaint	7	7	7	21
Nuisance	6	2	6	14
Order Violation	3	3	0	6
Ordinance Violation	1	1	1	3
Other	6	13	5	24
Paper Service	7	7	10	24
Parking	0	3	5	8
Person Lost/Found	5	3	6	14
Property Lost/Found	3	1	4	8
Public Assist	18	13	25	56
Radar	0	0	2	2
Robbery	1	1	0	2
RSO	1	1	4	6
SAR	1	0	4	5
School	1	0	1	2
Search Warrant	2	0	0	2
Security Check	101	95	78	274

Shots Heard	0	7	7	14
Special Ops	0	1	1	2
Substance Abuse	3	7	8	18
Suicide	8	7	4	19
Suspicious	78	66	55	199
Theft	10	14	13	37
Threat	1	3	1	5
Traffic	42	35	78	155
Trespass	5	8	12	25
Vehicle Recovery	1	1	5	7
Vehicle Theft	0	3	3	6
Warrant	9	7	11	27
Weapon	0	1	0	1
Welfare Check	12	20	10	42
Totals	579	580	609	1768

➤ All data was obtained through a LERMS Data Analysis and Mapping (DA&M) query.

Report presented by Gold Bar Chief of Police Sgt. David Casey  
Table and charts compiled by Volunteer Ray Coleman