



City of Gold Bar

Shoreline Master Program Skykomish River Wallace River May Creek

Legend

- Gold Bar City Limits
- Proposed SMA Boundary*
- Gold Bar UGA
- Rivers/Creeks

*SMA Boundary based on the definition of "shoreslines" found in RCW 90.58.030. More detailed information provided in the City's Inventory and Characterization Report.

Shoreline Jurisdiction Boundaries on this map are approximate. They have not been formally delineated or surveyed and are intended for planning purposes only. Additional site-specific evaluation may be needed to confirm/verify information shown. No warranties of any sort, including but not limited to accuracy, fitness, or merchantability, accompany this product.

Aerial Photo: 2007
Data Sources: Snohomish County GIS October 2009 & SMP Boundary derived by AHBL from existing data sources.

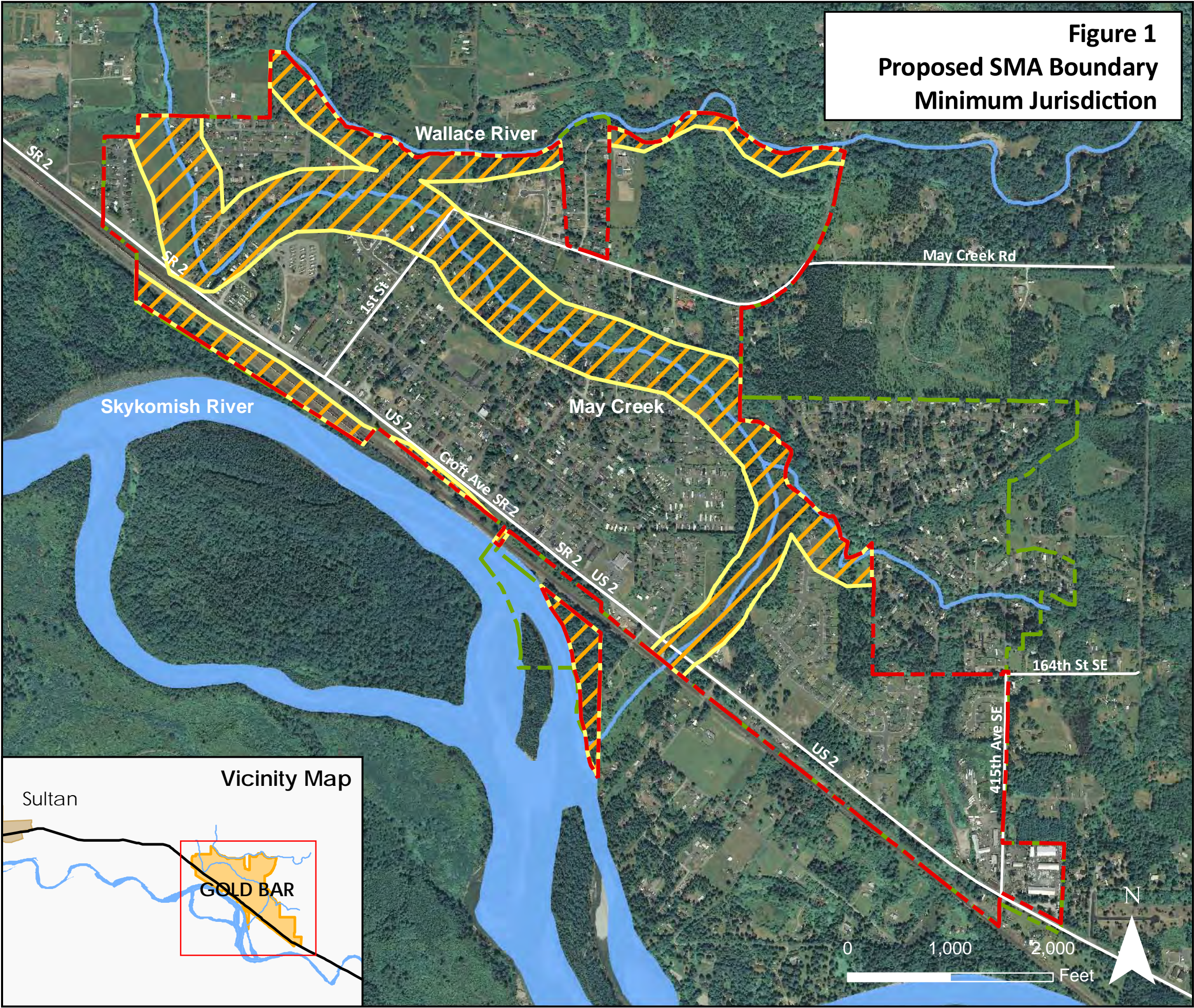
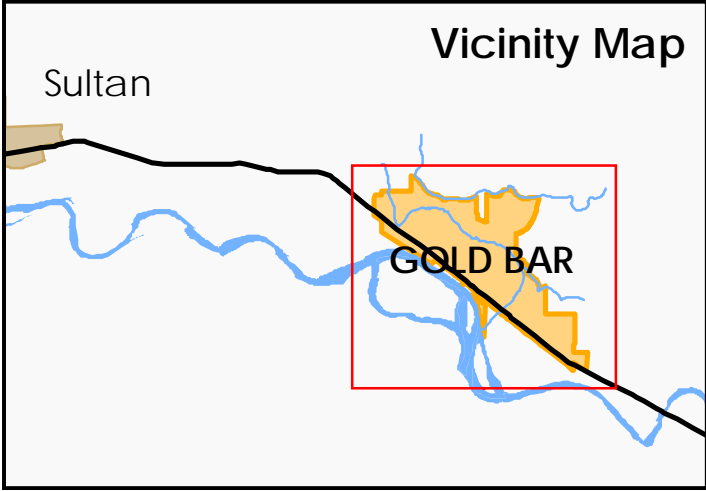


Figure 1
Proposed SMA Boundary
Minimum Jurisdiction





City of Gold Bar

Shoreline Master Program Skykomish River Wallace River May Creek

Legend

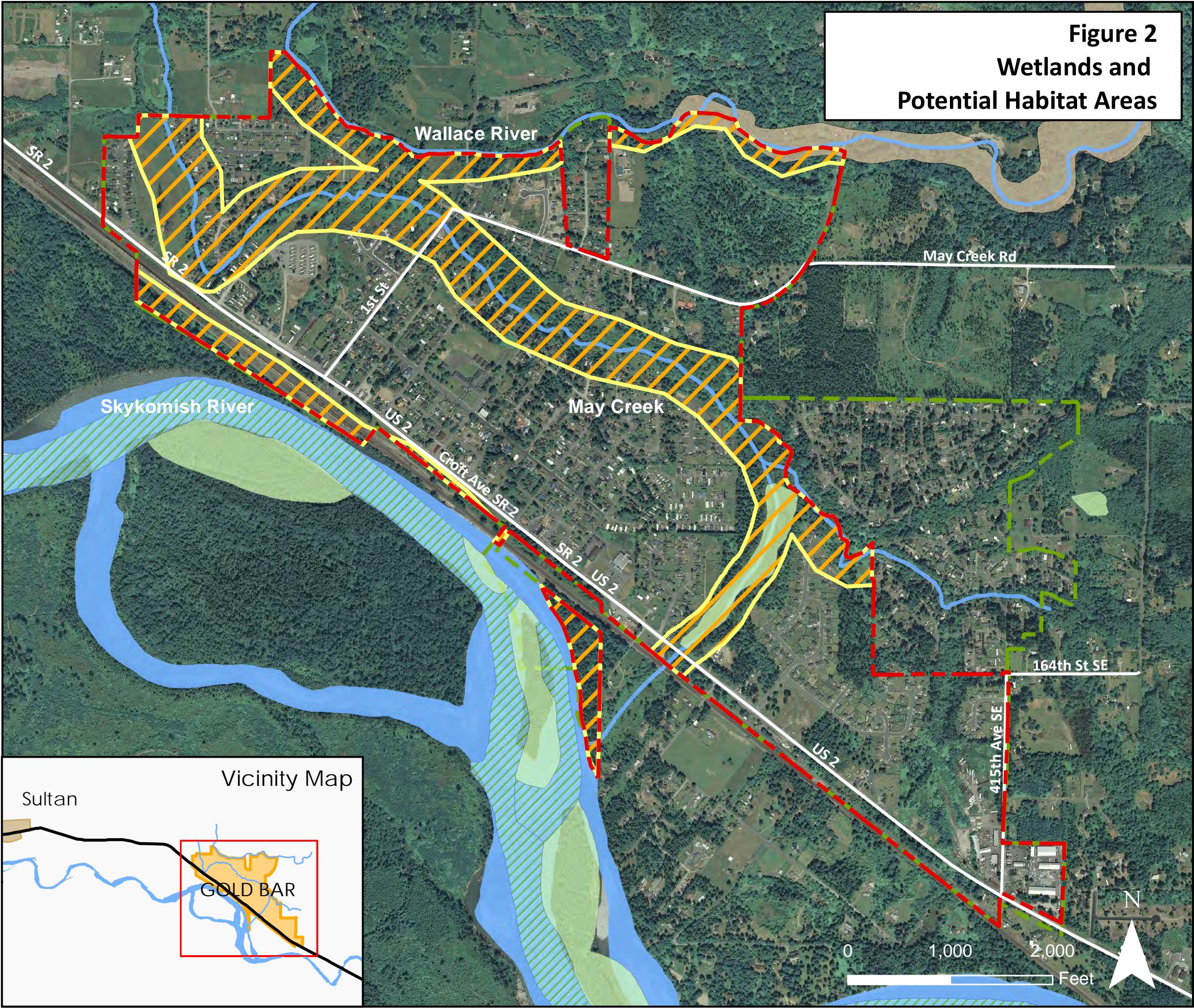
- Gold Bar City Limits
- Proposed SMA Boundary*
- Freshwater Wetland
- Riverine
- Gold Bar UGA
- Rivers/Creeks
- Harlequin Duck Habitat

*SMA Boundary based on the definition of "shorelines" found in RCW 90.58.030. More detailed information provided in the City's Inventory and Characterization Report.

Shoreline Jurisdiction Boundaries on this map are approximate. They have not been formally delineated or surveyed and are intended for planning purposes only. Additional site-specific evaluation may be needed to confirm/verify information shown. No warranties of any sort, including but not limited to accuracy, fitness, or merchantability, accompany this product.

Aerial Photo: 2007
Data Sources: Snohomish County GIS October 2009, WDFW Priority Habitat Species Digital Data, National Wetlands Inventory Data, and SMP Boundary derived by AHBL from existing data sources.

Figure 2
Wetlands and
Potential Habitat Areas





City of Gold Bar

Shoreline Master Program Skykomish River Wallace River May Creek

Legend

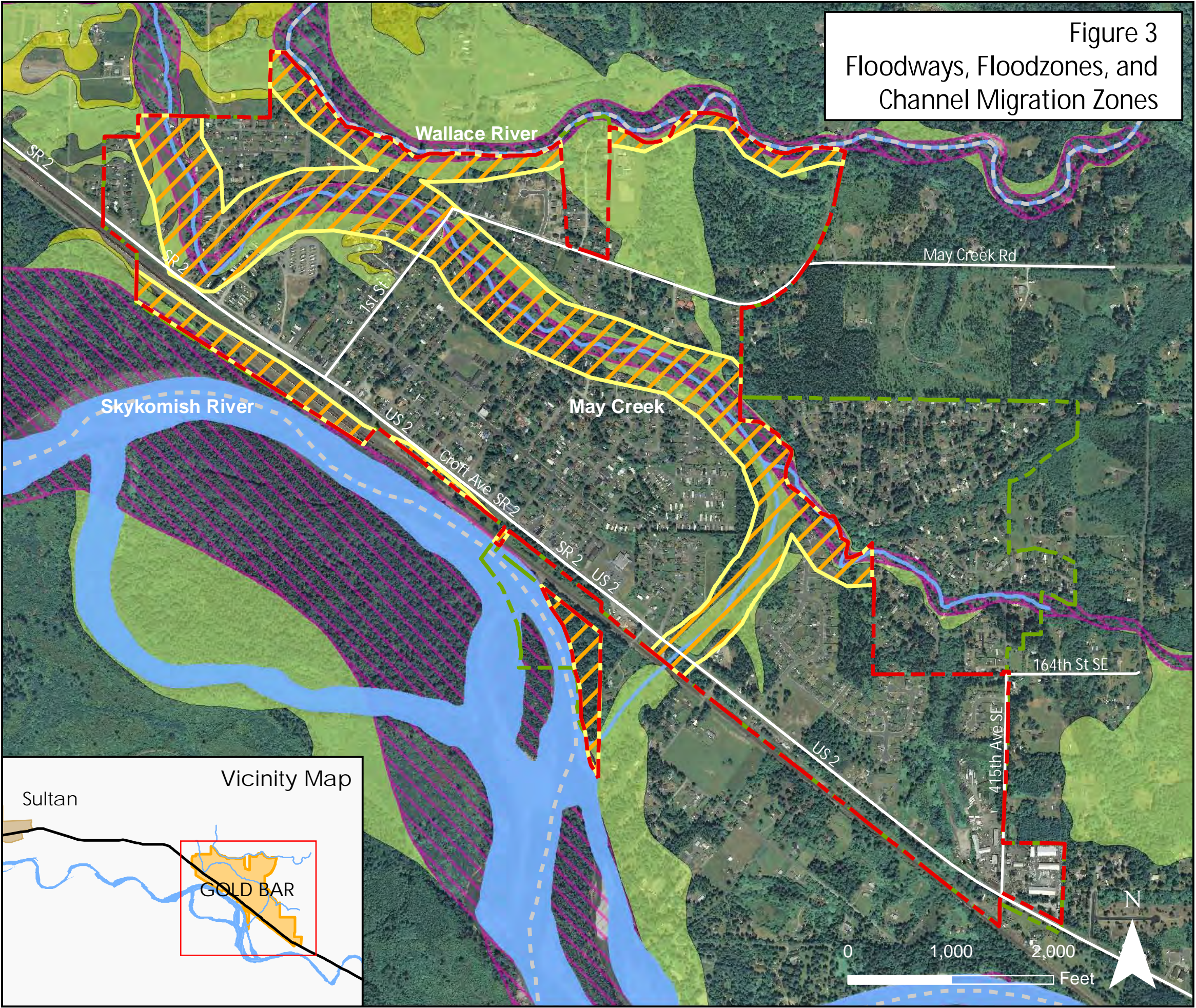
- Gold Bar City Limits
- Channel Migration Zone (CMZ)
- Proposed SMA Boundary*
- Gold Bar UGA
- Rivers/Creeks
- FLOODWAY
- 0.2% Annual Chance Flood Hazard
- Zone AE
(Areas where base floodplain elevations have been determined)

*SMA Boundary based on the definition of "shorelines" found in RCW 90.58.030. More detailed information provided in the City's Inventory and Characterization Report.

Shoreline Jurisdiction Boundaries on this map are approximate. They have not been formally delineated or surveyed and are intended for planning purposes only. Additional site-specific evaluation may be needed to confirm/verify information shown. No warranties of any sort, including but not limited to accuracy, fitness, or merchantability, accompany this product.

Aerial Photo: 2007
Data Sources: Snohomish County GIS October 2009, FEMA Q3 Digital Flood Data, and SMP Boundary derived by AHBL from existing data sources.

Figure 3
Floodways, Floodzones, and
Channel Migration Zones

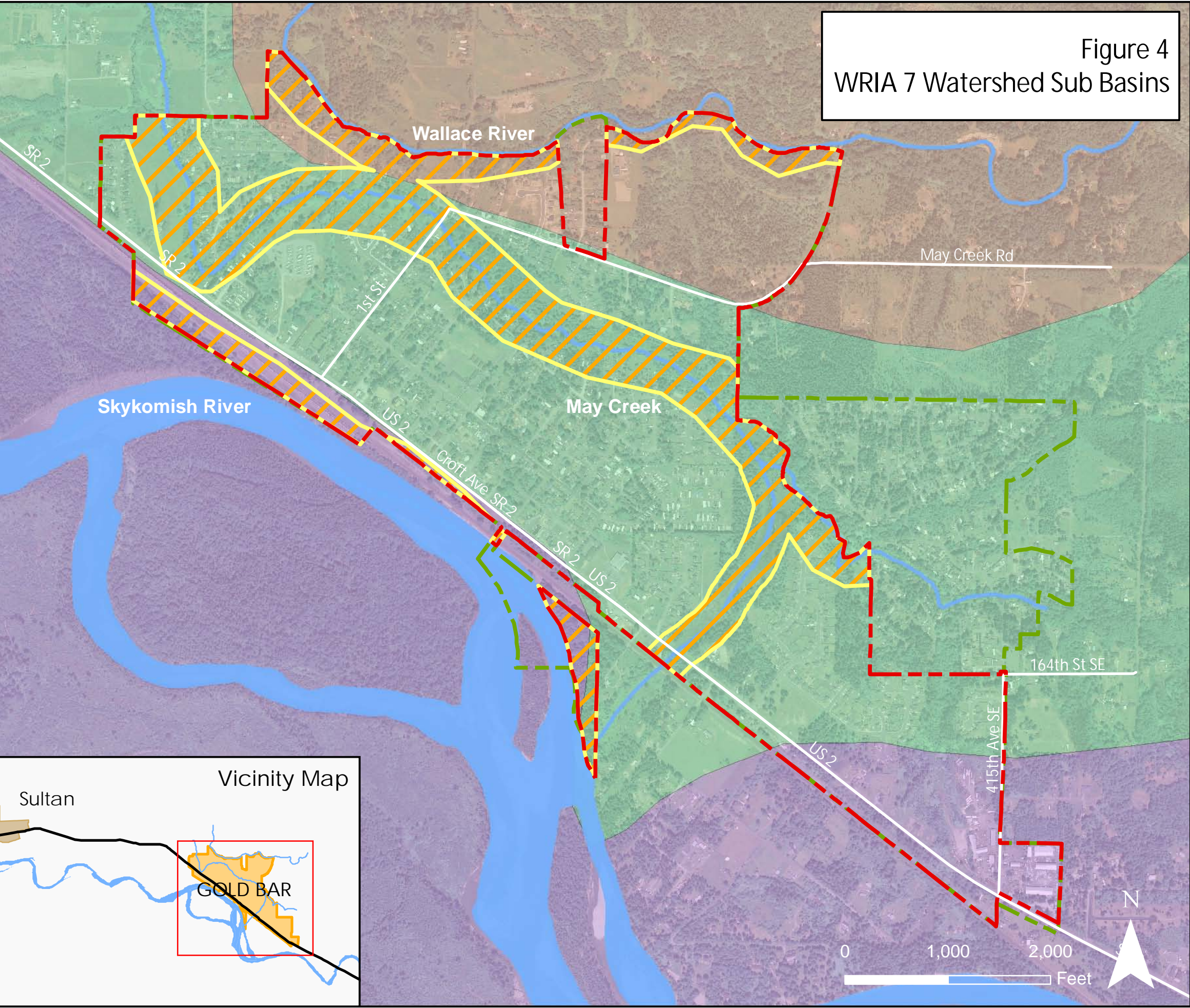




City of Gold Bar

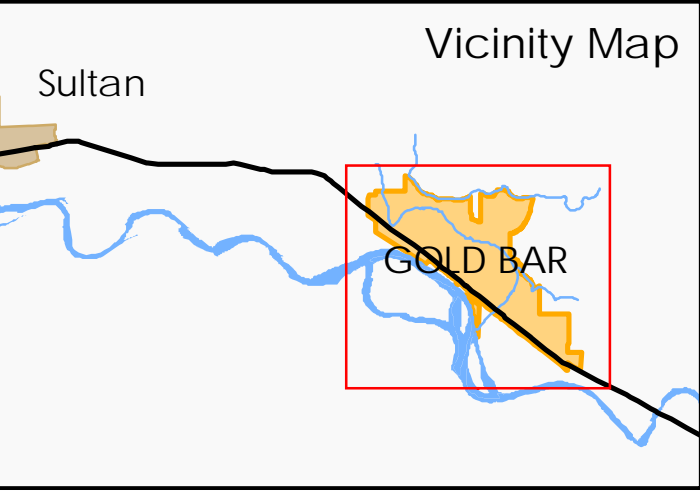
Shoreline Master Program
Skykomish River
Wallace River
May Creek

Figure 4
WRIA 7 Watershed Sub Basins



Legend

- Gold Bar City Limits
- Proposed SMA Boundary*
- Gold Bar UGA
- Rivers/Creeks
- May Creek Sub Basin
- Upper Mainstem Skykomish Sub Basin
- Upper Wallace River Sub Basin



*SMA Boundary based on the definition of "shorelines" found in RCW 90.58.030. More detailed information provided in the City's Inventory and Characterization Report.

Shoreline Jurisdiction Boundaries on this map are approximate. They have not been formally delineated or surveyed and are intended for planning purposes only. Additional site-specific evaluation may be needed to confirm/verify information shown. No warranties of any sort, including but not limited to accuracy, fitness, or merchantability, accompany this product.

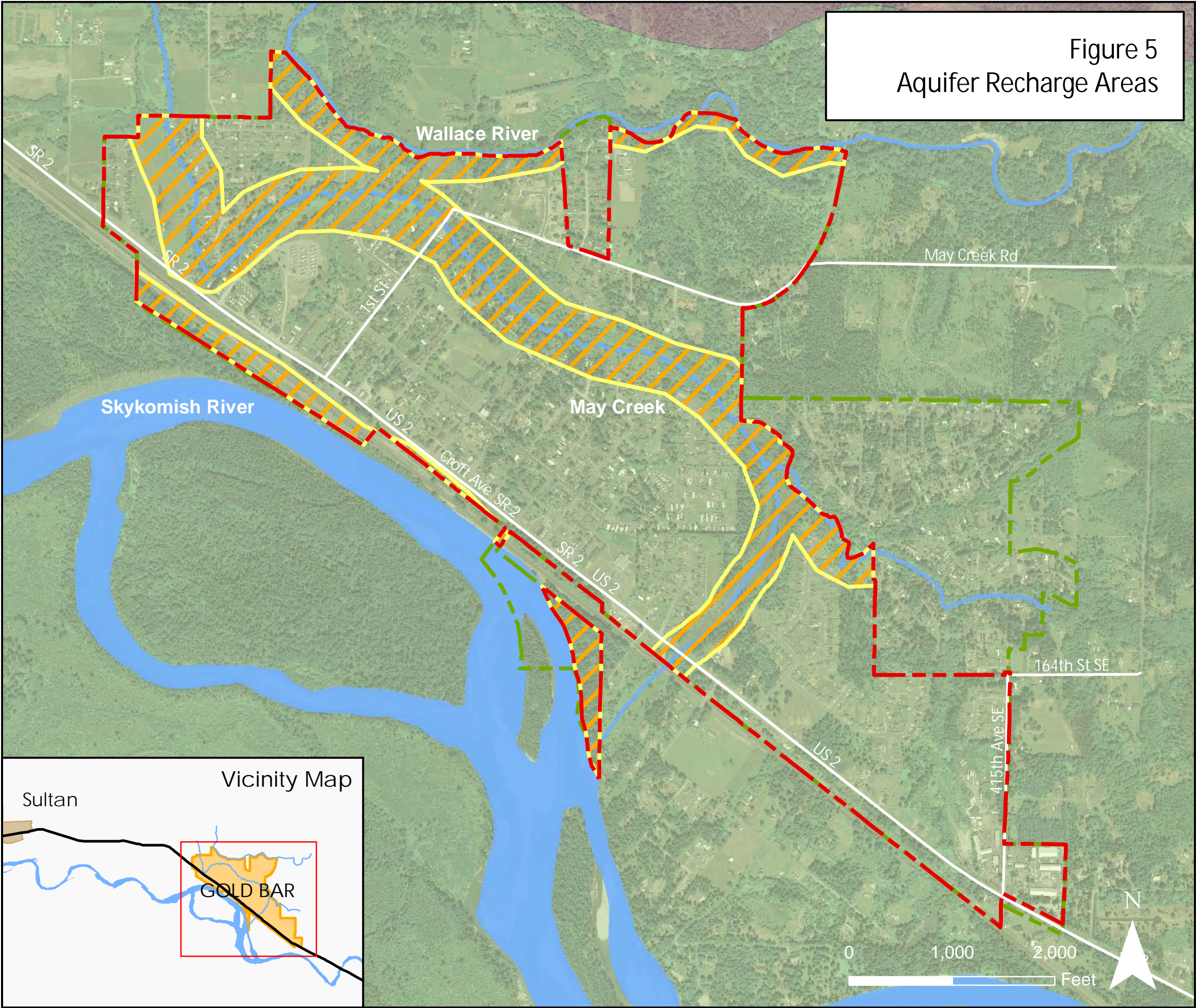
Aerial Photo: 2007
Data Sources: Snohomish County GIS October 2009 & SMP Boundary derived by AHBL from existing data sources.



City of Gold Bar

Shoreline Master Program
Skykomish River
Wallace River
May Creek

Figure 5
Aquifer Recharge Areas



Legend

- Gold Bar City Limits
- Proposed SMA Boundary*
- Gold Bar UGA
- Rivers/Creeks
- 2: Medium Aquifer Sensitivity (40 to 100 ft.)
- 3: High Aquifer Sensitivity (0 to 40 ft.)

*SMA Boundary based on the definition of "shorelines" found in RCW 90.58.030. More detailed information provided in the City's Inventory and Characterization Report.

Shoreline Jurisdiction Boundaries on this map are approximate. They have not been formally delineated or surveyed and are intended for planning purposes only. Additional site-specific evaluation may be needed to confirm/verify information shown. No warranties of any sort, including but not limited to accuracy, fitness, or merchantability, accompany this product.

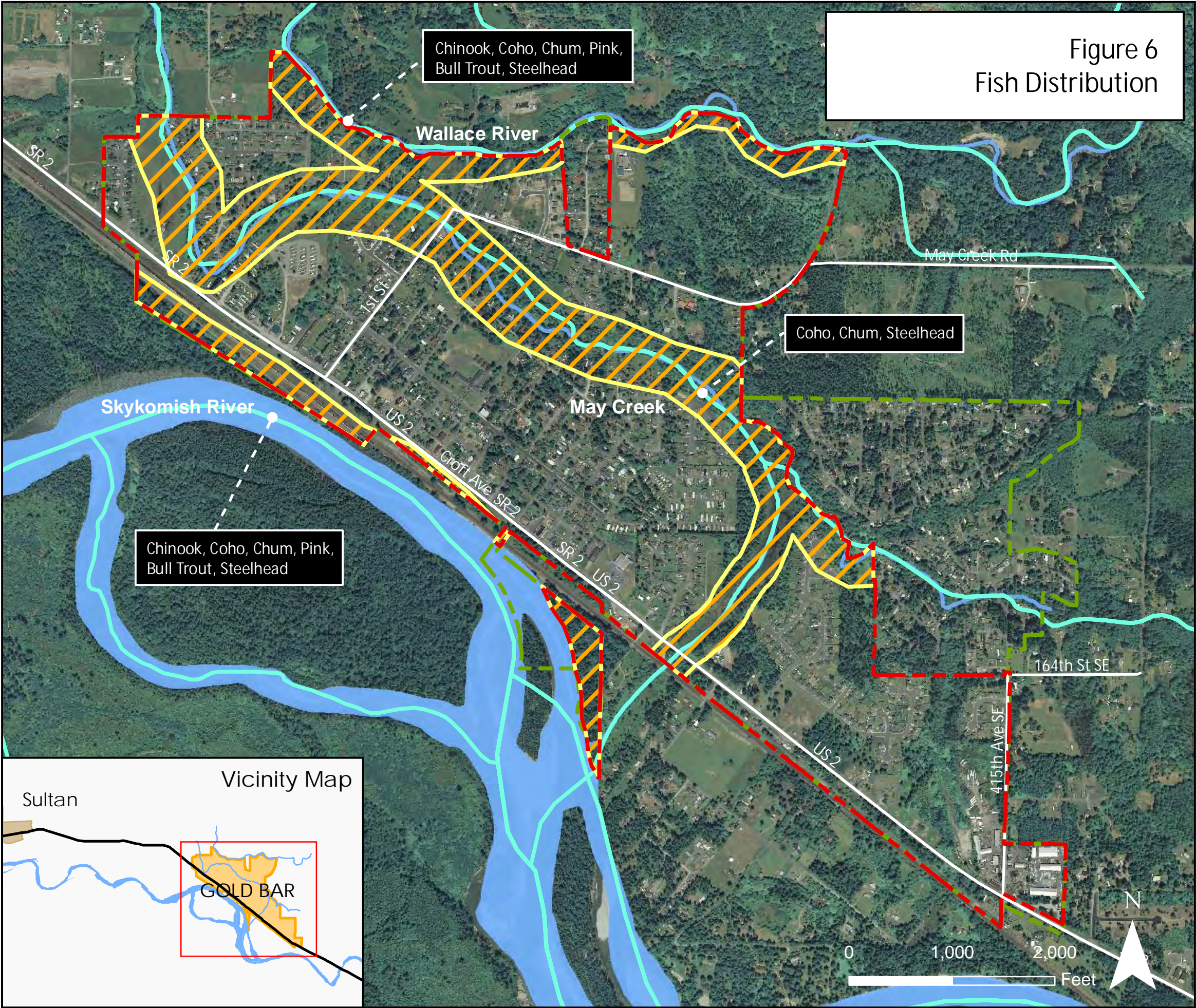
Aerial Photo: 2007
Data Sources: Snohomish County GIS October 2009 & SMP Boundary derived by AHBL from existing data sources.



City of Gold Bar

Shoreline Master Program Skykomish River Wallace River May Creek

Figure 6
Fish Distribution



Legend

- Gold Bar City Limits
- Proposed SMA Boundary*
- Gold Bar UGA
- Fish Distribution
- Rivers/Creeks

*SMA Boundary based on the definition of "shoreslines" found in RCW 90.58.030. More detailed information provided in the City's Inventory and Characterization Report.

Shoreline Jurisdiction Boundaries on this map are approximate. They have not been formally delineated or surveyed and are intended for planning purposes only. Additional site-specific evaluation may be needed to confirm/verify information shown. No warranties of any sort, including but not limited to accuracy, fitness, or merchantability, accompany this product.

Aerial Photo: 2007
Data Sources: Snohomish County GIS October 2009, WDFW Priority Habitat Species Digital Data and SMP Boundary derived by AHBL from existing data sources.



City of Gold Bar

Shoreline Master Program Skykomish River Wallace River May Creek

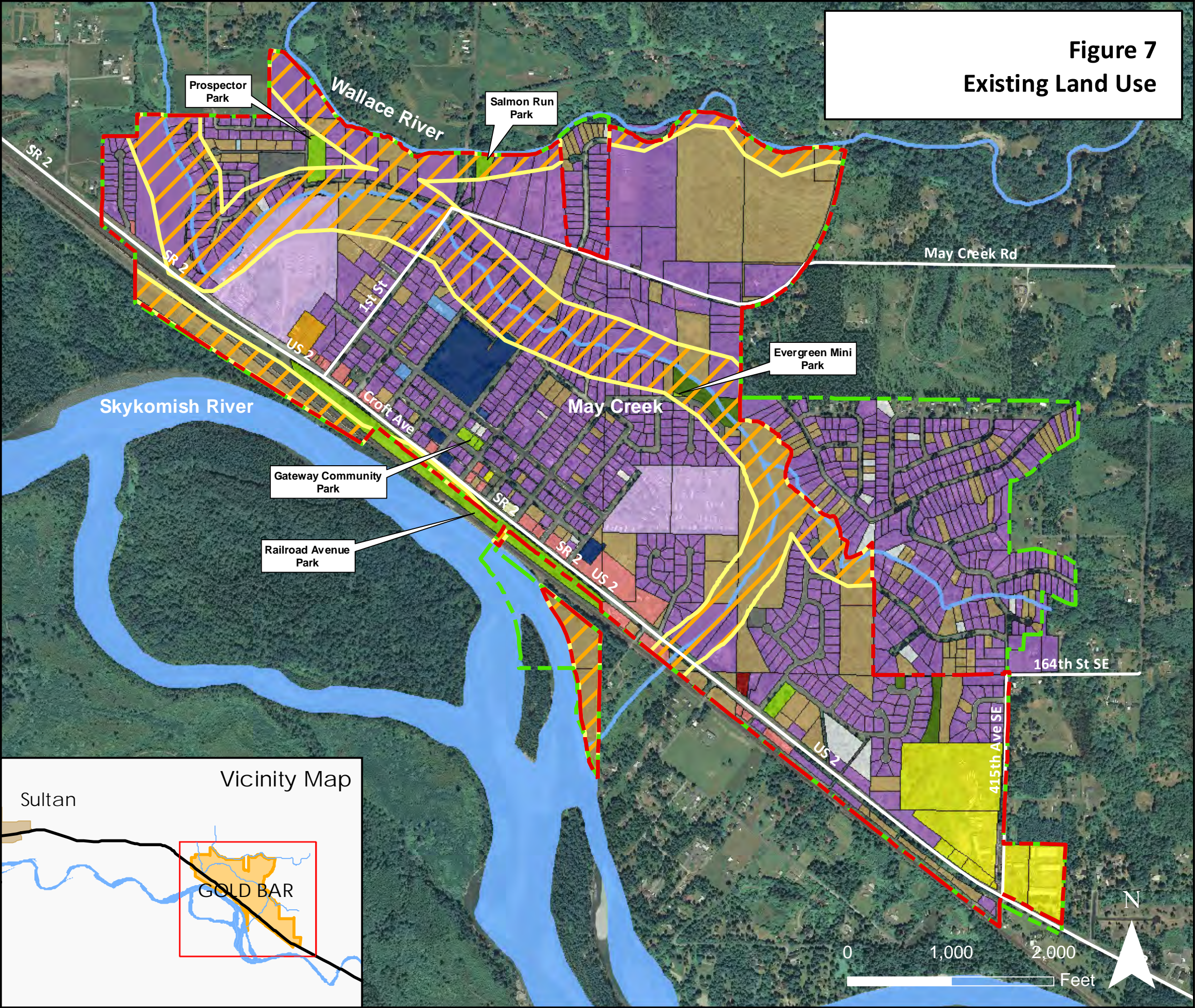
Legend

- Gold Bar City Limits
- Proposed SMA Boundary*
- Gold Bar UGA
- Rivers/Creeks
- Extensive Commercial
- Retail Commercial
- MFR (3+ du)
- Manufacturing
- Warehouse
- Govt/Educ
- Institutional
- Util/Trans/Comm
- Mobile Home Park
- SFR & Duplex
- Common Area
- Parks
- Undeveloped
- Unknown
- Water Area

*SMA Boundary based on the definition of "shorelines" found in RCW 90.58.030. More detailed information provided in the City's Inventory and Characterization Report.

Shoreline Jurisdiction Boundaries on this map are approximate. They have not been formally delineated or surveyed and are intended for planning purposes only. Additional site-specific evaluation may be needed to confirm/verify information shown. No warranties of any sort, including but not limited to accuracy, fitness, or merchantability, accompany this product.

Aerial Photo: 2007
Data Sources: Snohomish County GIS October 2009, Existing Land Use Data from BHC and SMP Boundary derived by AHBL from existing data sources.





City of Gold Bar

Shoreline Master Program Skykomish River Wallace River May Creek

Legend

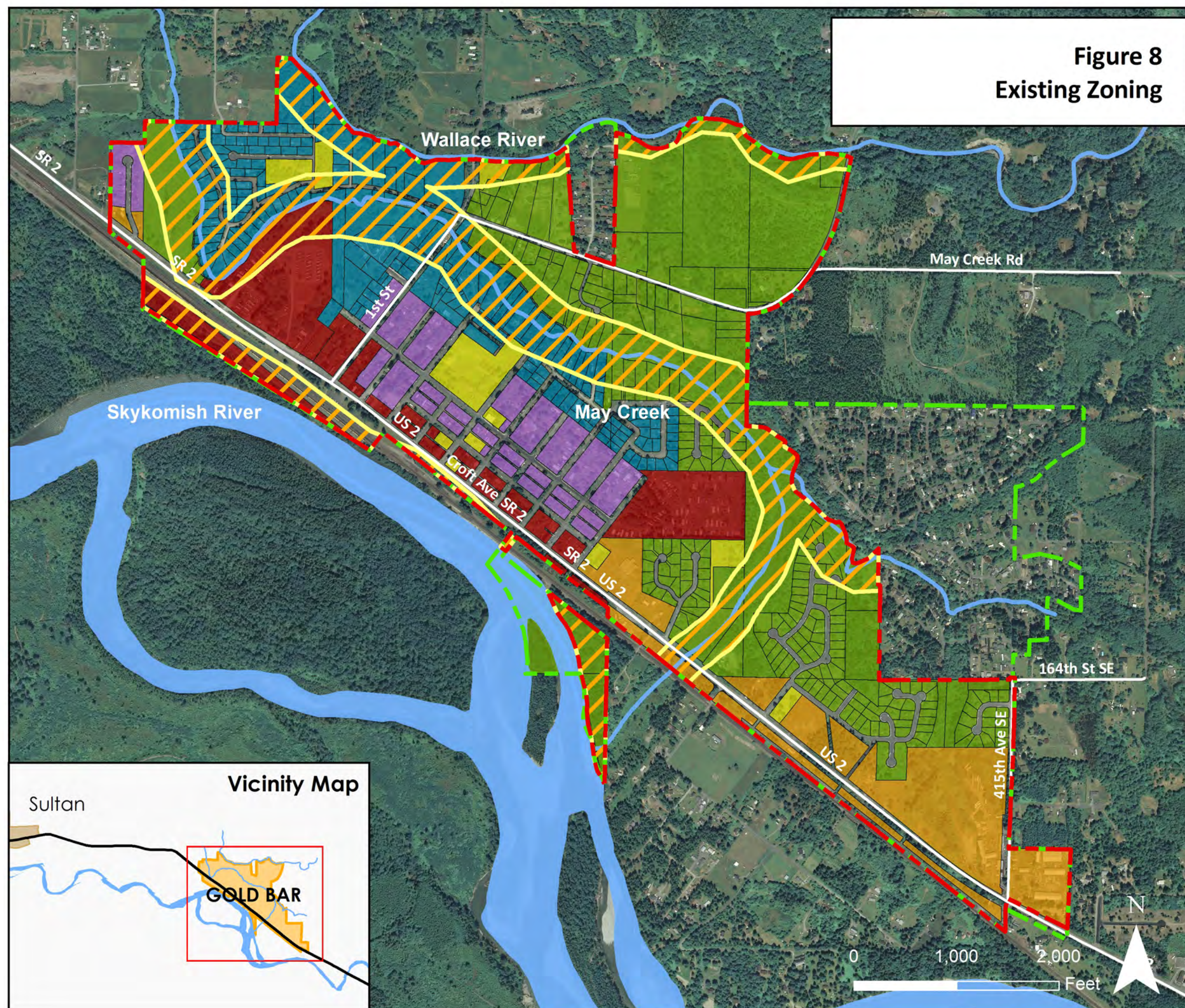
- Gold Bar City Limits
- Gold Bar UGA
- Proposed SMA Boundary*
- Rivers/Creeks
- Community Business (CB)
- General Commercial (GC)
- Public Spaces & Parks (PSP)
- Residential 12,500 (R12500)
- Residential 9,600 (R9600)
- Residential 7,200 (R7200)

*SMA Boundary based on the definition of "shorelines" found in RCW 90.58.030. More detailed information provided in the City's Inventory and Characterization Report.

Shoreline Jurisdiction Boundaries on this map are approximate. They have not been formally delineated or surveyed and are intended for planning purposes only. Additional site-specific evaluation may be needed to confirm/verify information shown. No warranties of any sort, including but not limited to accuracy, fitness, or merchantability, accompany this product.

Aerial Photo: 2007
Data Sources: Snohomish County GIS October 2009, Zoning Data from City of Gold Bar Comprehensive Plan (2004). SMP Boundary derived by AHBL from existing data sources.

Figure 8
Existing Zoning





City of Gold Bar

Shoreline Master Program Skykomish River Wallace River May Creek

Legend

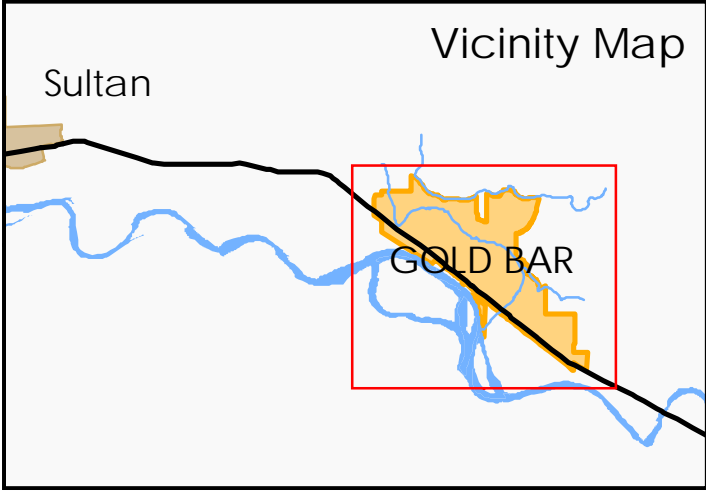
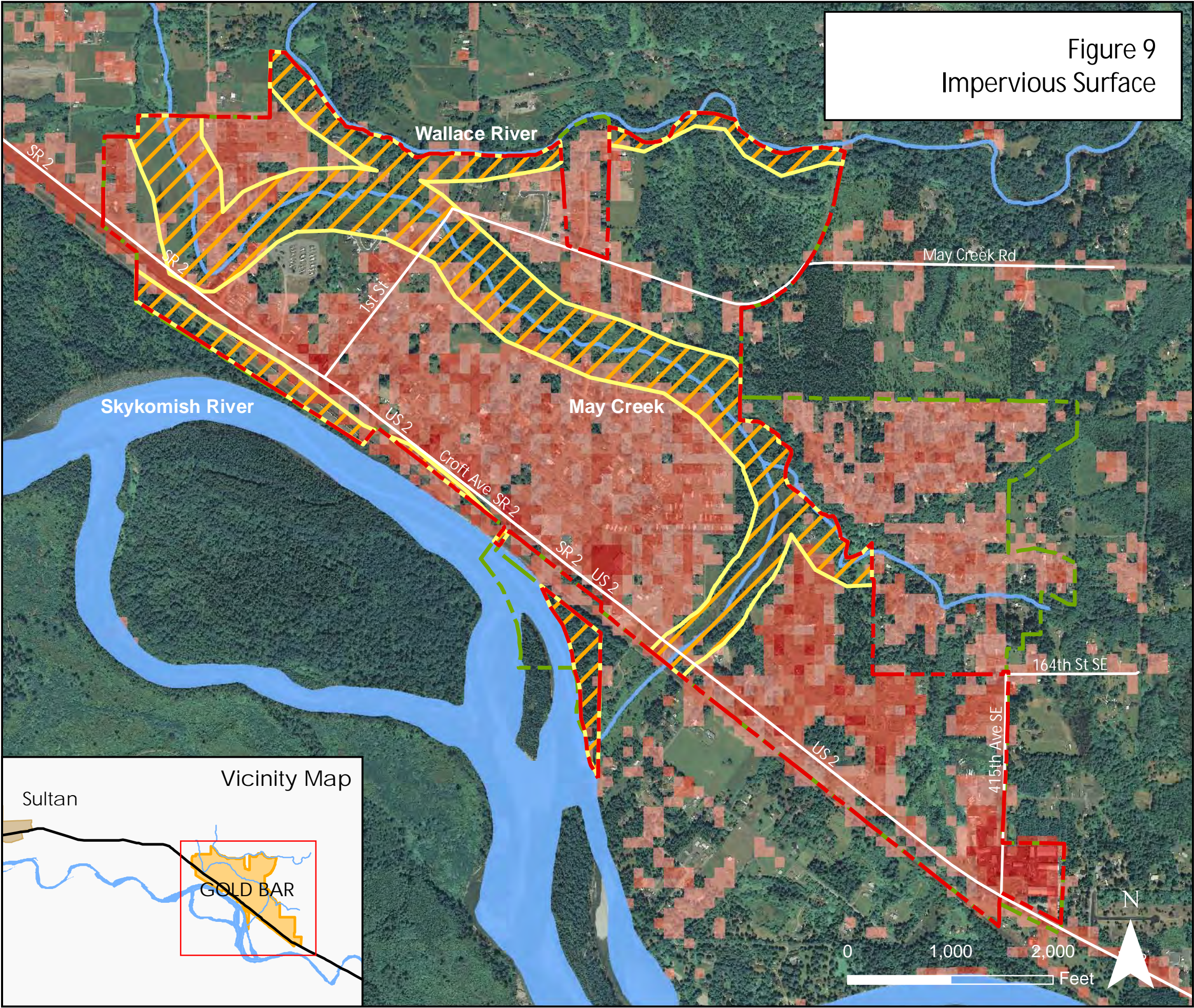
- Gold Bar City Limits
- Proposed SMA Boundary*
- Gold Bar UGA
- Rivers/Creeks
- 0% - 13% Impervious
- 14% - 34% Impervious
- 35% - 52% Impervious
- 53% - 75% Impervious
- 76% - 100% Impervious

*SMA Boundary based on the definition of "shorelines" found in RCW 90.58.030. More detailed information provided in the City's Inventory and Characterization Report.

Shoreline Jurisdiction Boundaries on this map are approximate. They have not been formally delineated or surveyed and are intended for planning purposes only. Additional site-specific evaluation may be needed to confirm/verify information shown. No warranties of any sort, including but not limited to accuracy, fitness, or merchantability, accompany this product.

Aerial Photo: 2007
Data Sources: Snohomish County GIS October 2009, Impervious Surface Data from WA State DOE and SMP Boundary derived by AHBL from existing data sources.

Figure 9
Impervious Surface





City of Gold Bar

Shoreline Master Program Skykomish River Wallace River May Creek

Legend

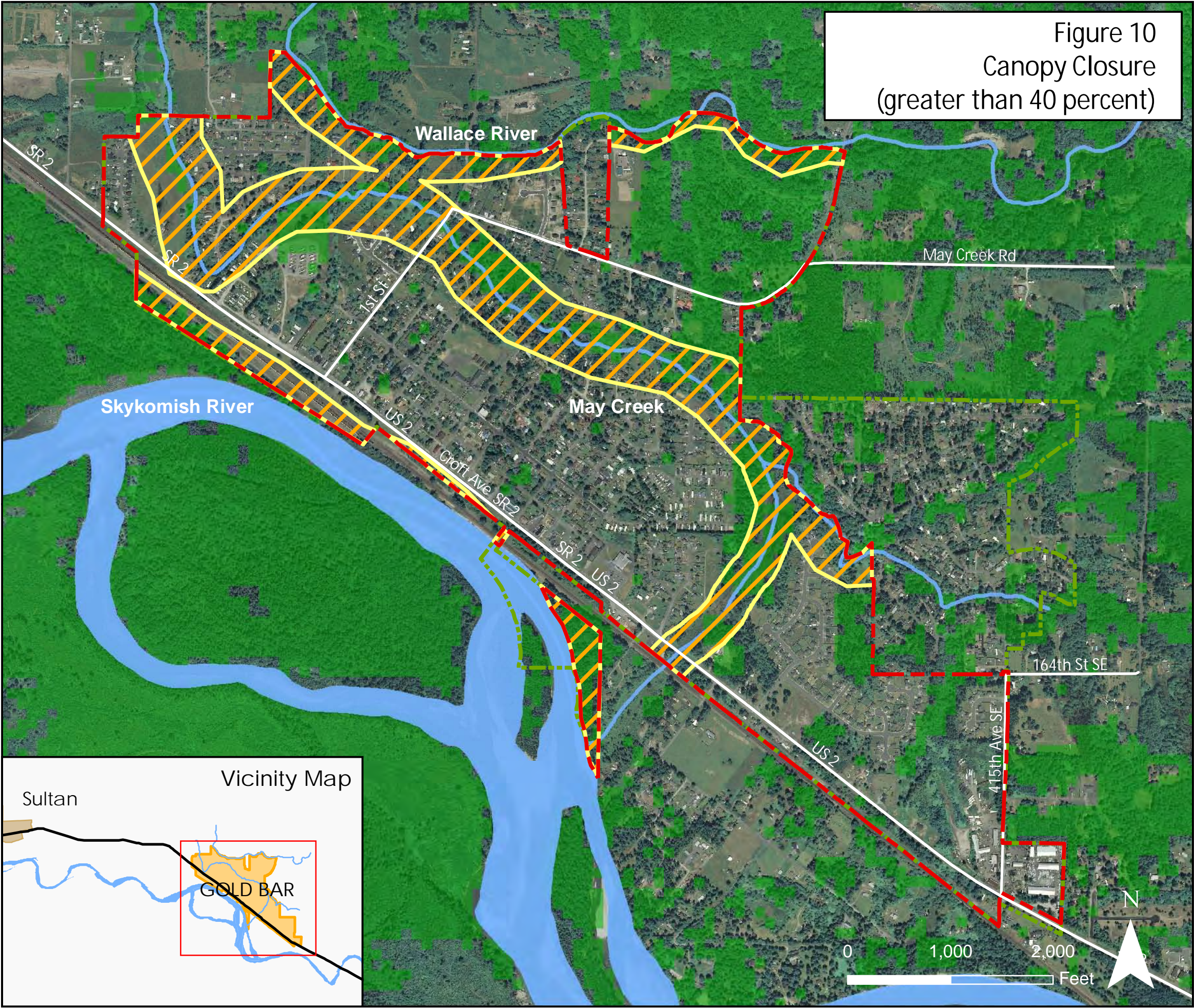
- Gold Bar City Limits
- Proposed SMA Boundary*
- Gold Bar UGA
- Rivers/Creeks
- Canopy Closure >= 40%

*SMA Boundary based on the definition of "shorelines" found in RCW 90.58.030. More detailed information provided in the City's Inventory and Characterization Report.

Shoreline Jurisdiction Boundaries on this map are approximate. They have not been formally delineated or surveyed and are intended for planning purposes only. Additional site-specific evaluation may be needed to confirm/verify information shown. No warranties of any sort, including but not limited to accuracy, fitness, or merchantability, accompany this product.

Aerial Photo: 2007
Data Sources: Snohomish County GIS October 2009, Canopy Closure data from WA State DOE and SMP Boundary derived by AHBL from existing data sources.

Figure 10
Canopy Closure
(greater than 40 percent)

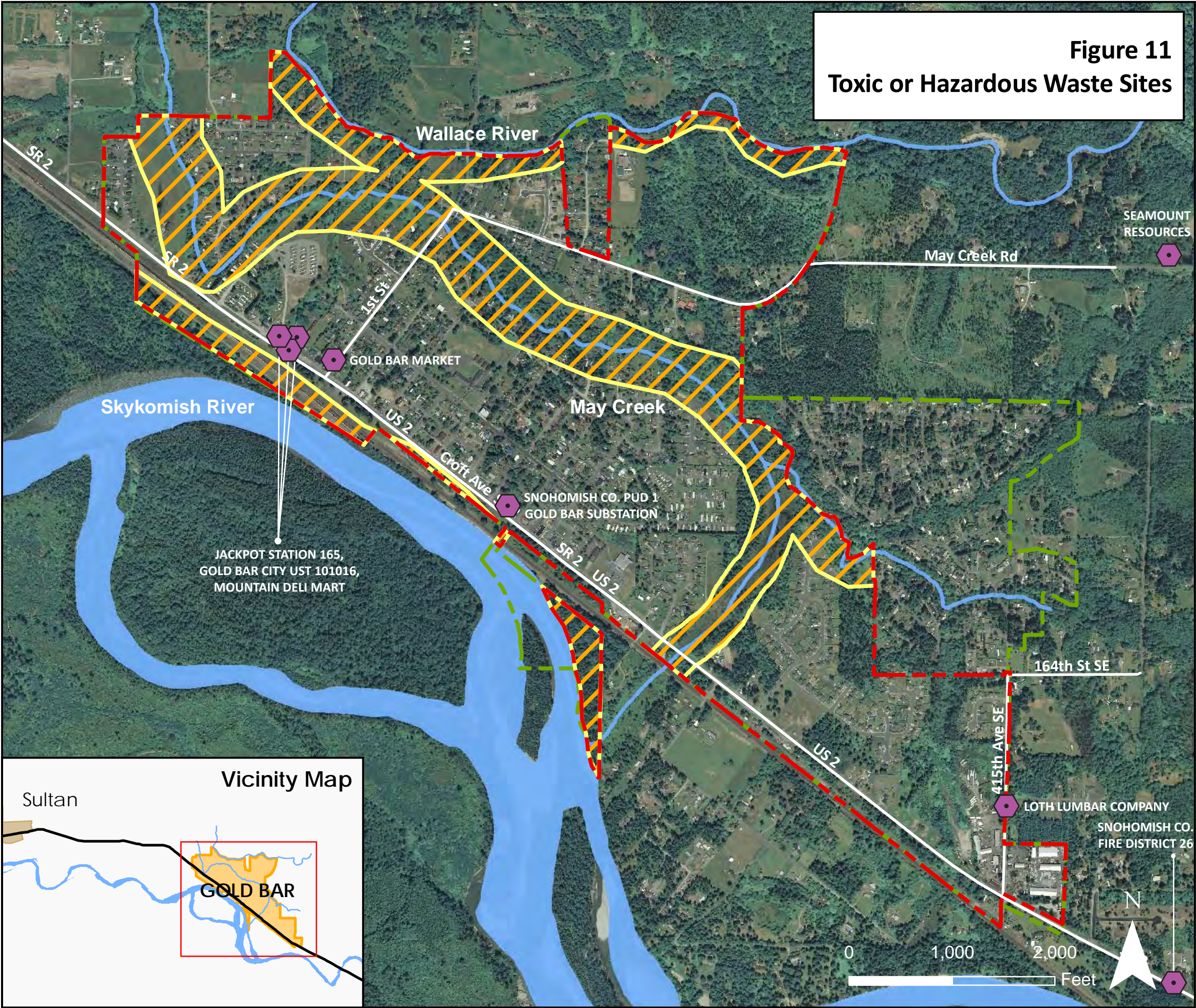




City of Gold Bar

Shoreline Master Program Skykomish River Wallace River May Creek

Figure 11
Toxic or Hazardous Waste Sites



Legend

- Gold Bar City Limits
- Proposed SMA Boundary*
- Gold Bar UGA
- Rivers/Creeks
- State Facility

*SMA Boundary based on the definition of "shoreslines" found in RCW 90.58.030. More detailed information provided in the City's Inventory and Characterization Report.

Shoreline Jurisdiction Boundaries on this map are approximate. They have not been formally delineated or surveyed and are intended for planning purposes only. Additional site-specific evaluation may be needed to confirm/verify information shown. No warranties of any sort, including but not limited to accuracy, fitness, or merchantability, accompany this product.

Aerial Photo: 2007
Data Sources: Snohomish County GIS October 2009, WA State DOE and SMP Boundary derived by AHBL from existing data sources.



City of Gold Bar

Shoreline Master Program Skykomish River Wallace River May Creek

Legend

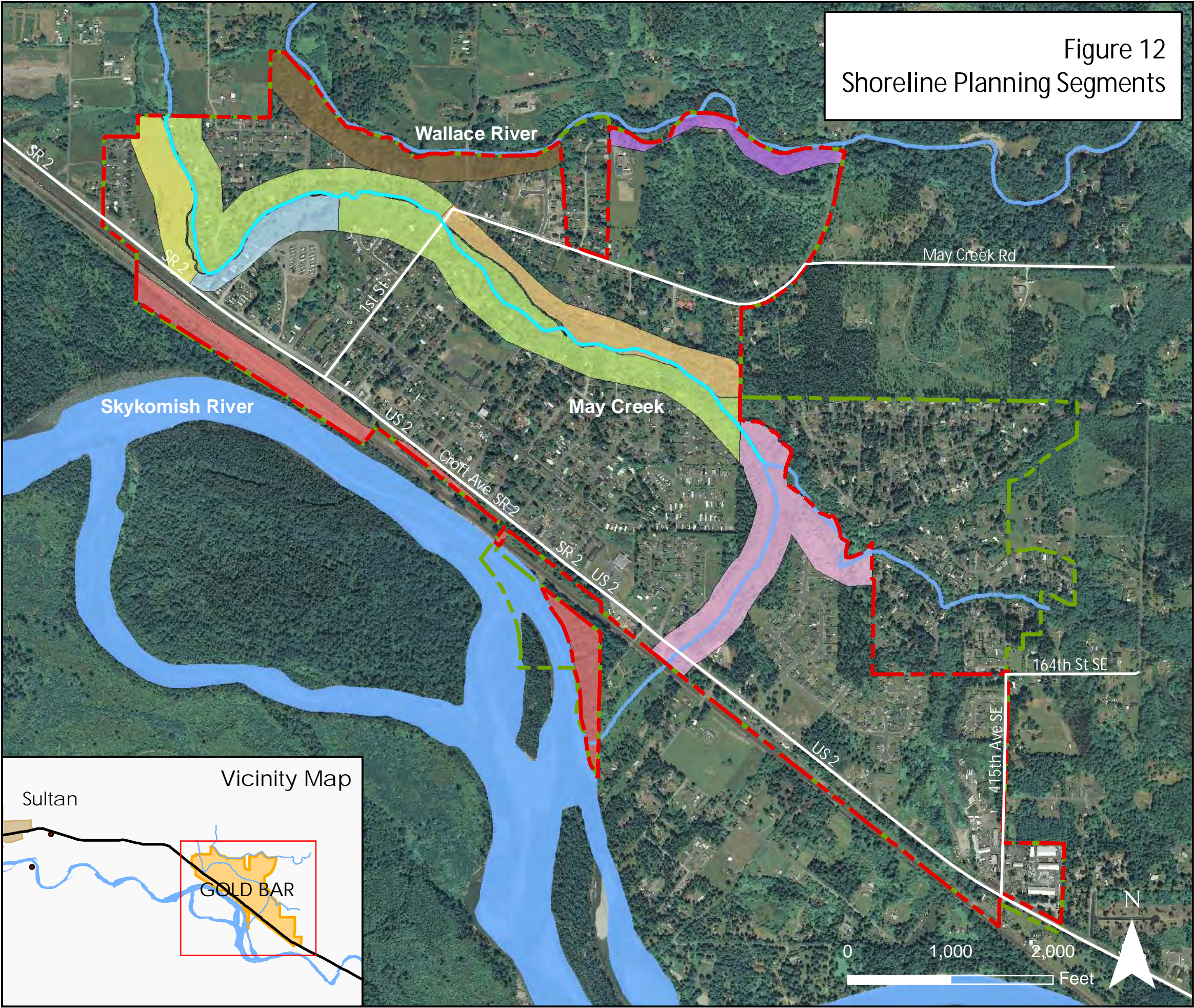
- Gold Bar City Limits
- Gold Bar UGA
- Rivers/Creeks
- Segment 1
- Segment 2
- Segment 3
- Segment 4
- Segment 5
- Segment 6
- Segment 7
- Segment 8

*SMA Boundary based on the definition of "shorelines" found in RCW 90.58.030. More detailed information provided in the City's Inventory and Characterization Report.

Shoreline Jurisdiction Boundaries on this map are approximate. They have not been formally delineated or surveyed and are intended for planning purposes only. Additional site-specific evaluation may be needed to confirm/verify information shown. No warranties of any sort, including but not limited to accuracy, fitness, or merchantability, accompany this product.

Aerial Photo: 2007
Data Sources: Snohomish County GIS October 2009 and SMP
Boundary derived by AHBL from existing data sources.

Figure 12
Shoreline Planning Segments





City of Gold Bar

Shoreline Master Program Skykomish River Wallace River May Creek

Legend

- Gold Bar City Limits
- Proposed SMA Boundary*
- Gold Bar UGA
- Rivers/Creeks
- Existing Public Access

*SMA Boundary based on the definition of "shorelines" found in RCW 90.58.030. More detailed information provided in the City's Inventory and Characterization Report.

Shoreline Jurisdiction Boundaries on this map are approximate. They have not been formally delineated or surveyed and are intended for planning purposes only. Additional site-specific evaluation may be needed to confirm/verify information shown. No warranties of any sort, including but not limited to accuracy, fitness, or merchantability, accompany this product.

Aerial Photo: 2007
Data Sources: Snohomish County GIS October 2009 & SMP Boundary derived by AHBL from existing data sources.

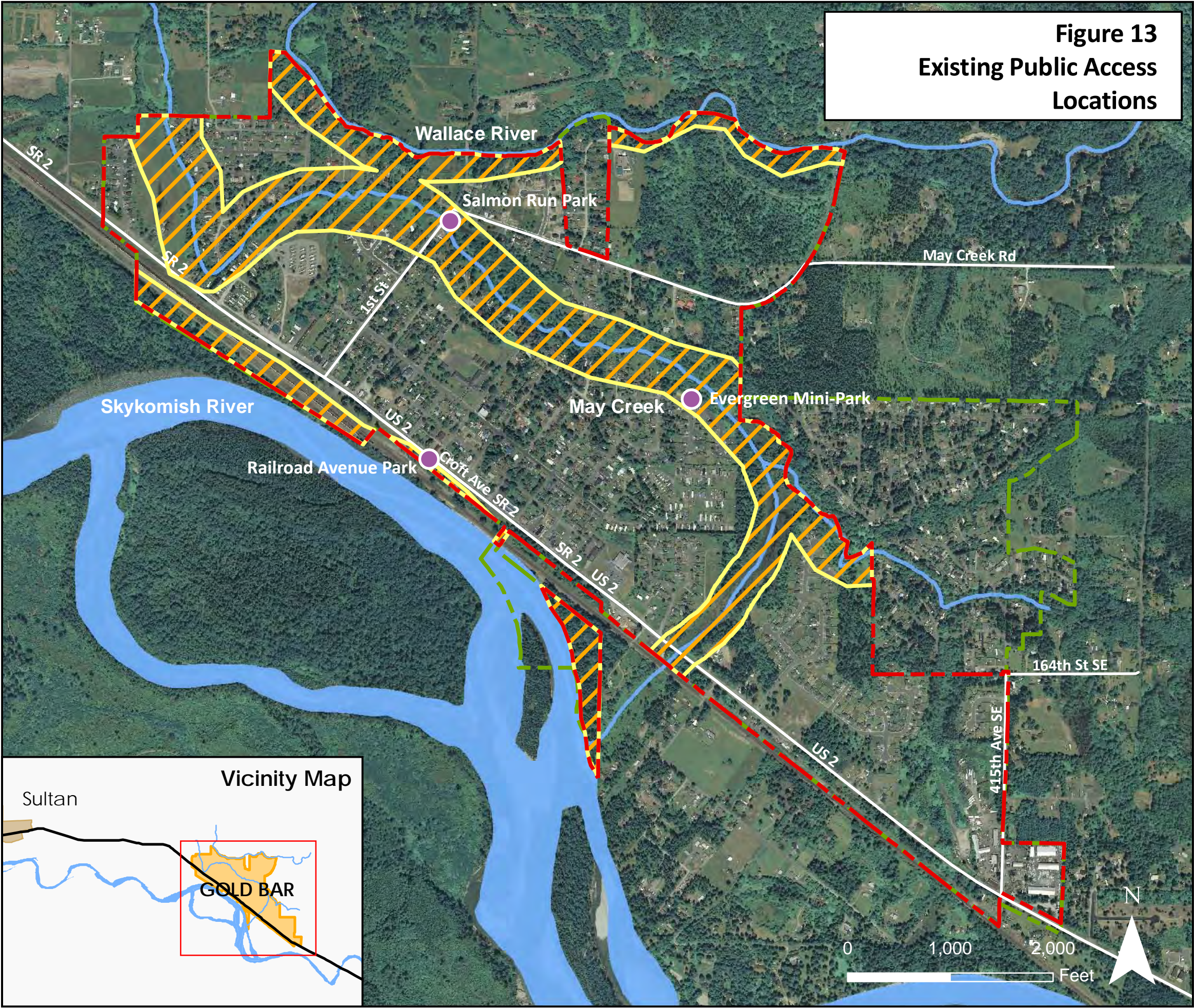
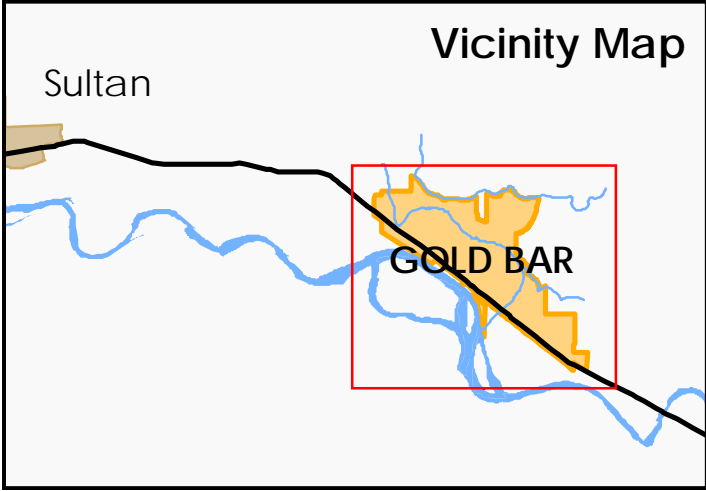


Figure 13
Existing Public Access
Locations

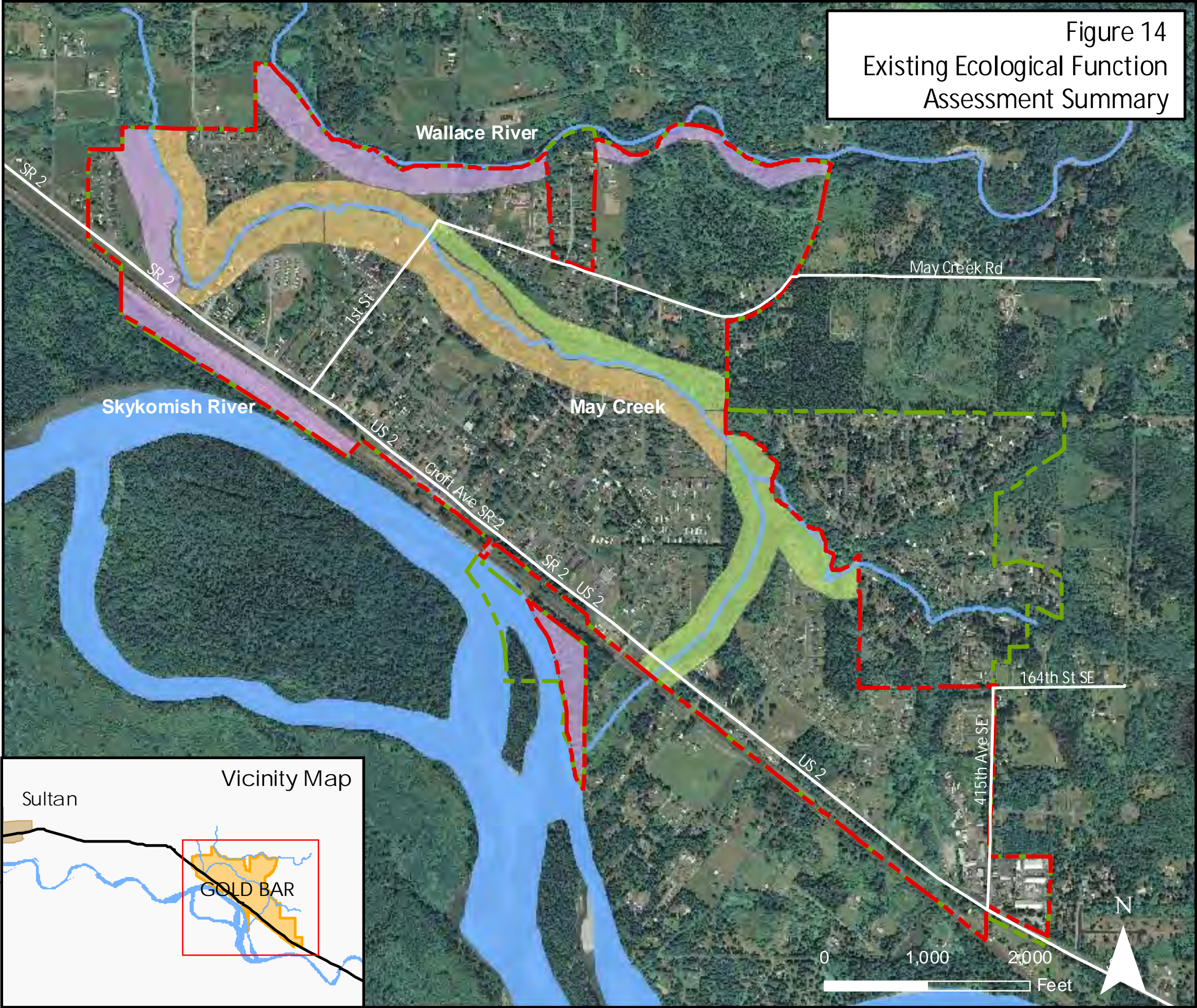




City of Gold Bar

Shoreline Master Program
Skykomish River
Wallace River
May Creek

Figure 14
Existing Ecological Function
Assessment Summary



Legend

- Gold Bar City Limits
- Gold Bar UGA
- Rivers/Creeks
- 2 - Low/Moderate
- 3 - Moderate
- 4 - Moderate/High

Note: Categories represent a generalized summary of overall ecological function. Please see the Shoreline Characterization Report, Section 5 for additional detail.

*SMA Boundary based on the definition of "shorelines" found in RCW 90.58.030. More detailed information provided in the City's Inventory and Characterization Report.

Shoreline Jurisdiction Boundaries on this map are approximate. They have not been formally delineated or surveyed and are intended for planning purposes only. Additional site-specific evaluation may be needed to confirm/verify information shown. No warranties of any sort, including but not limited to accuracy, fitness, or merchantability, accompany this product.

Aerial Photo: 2007
Data Sources: Snohomish County GIS October 2009 and SMP
Boundary derived by AHBL from existing data sources.



City of Gold Bar

Shoreline Master Program Skykomish River Wallace River May Creek

Legend

- Gold Bar City Limits
- Gold Bar UGA
- Rivers/Creeks
- High Intensity
- Natural
- Shoreline Residential
- Urban Conservancy
- Aquatic

*SMA Boundary based on the definition of "shorelines" found in RCW 90.58.030. More detailed information provided in the City's Inventory and Characterization Report.

Shoreline Jurisdiction Boundaries on this map are approximate. They have not been formally delineated or surveyed and are intended for planning purposes only. Additional site-specific evaluation may be needed to confirm/verify information shown. No warranties of any sort, including but not limited to accuracy, fitness, or merchantability, accompany this product.

Aerial Photo: 2007
Data Sources: Snohomish County GIS October 2009 and SMP Boundary derived by AHBL from existing data sources.

Figure 15
Potential Environment
Designations

